



# PROSPECTUS

2025-26







## ***Nau mai, haere mai...***

AKA Education Group brings together six of New Zealand's leading Private Tertiary Providers: Alpha Educational Institute, Kauri Academy, AGI Education, SRA Academy, CC Training Academy (CCTA) and Auckland College of Tertiary Studies (ACTS).

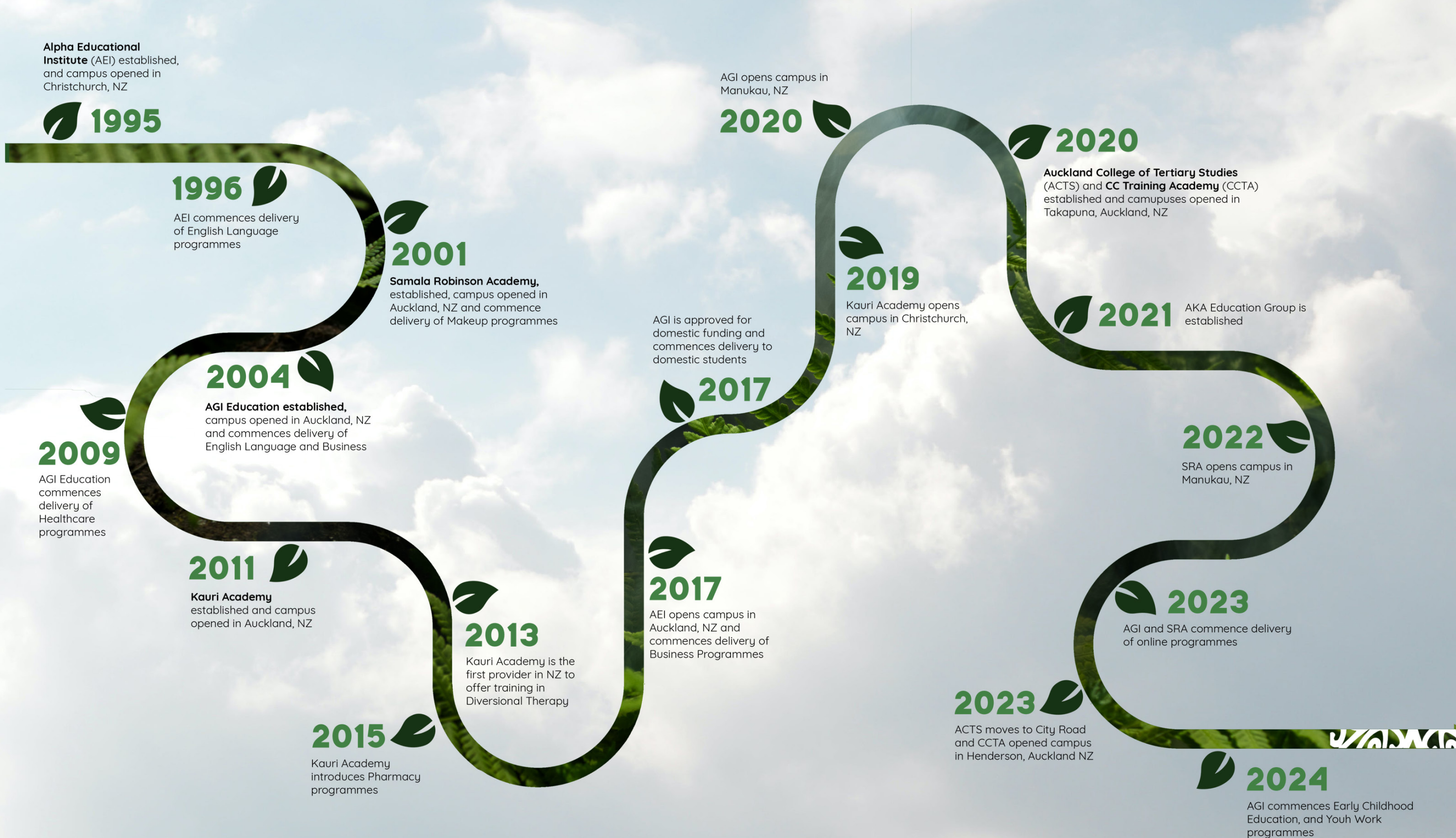
Combining proven expertise and outstanding learner outcomes in the Business, Healthcare, Information Technology, Makeup Artistry, and Construction sectors, we have come together with a vision to grow and empower our students to make a difference for themselves, their whānau and their society.

At AKA Education Group we put our students at the heart of everything we do, engaging and nurturing our students and maintaining a focus on the ability to 'do' rather than just 'know'. In this way we guide and support our students on their journeys into their chosen careers.





# Growing Potential









# Index

About AKA Education Group.....	
Our Providers.....	1-2
Our locations.....	3-4
Why study with us?.....	5-6
Domestic Funding.....	9-10
International Students.....	11-12
Your journey starts here.....	13-14

## Business

Diploma in Business Management (Brand Management) Level 3.....	17-18
--	-------

## Healthcare

Certificate in Pharmacy (Introduction) Level 3.....	17-18
Certificate in Diversional Therapy & Community Health Level 4.....	19-20
New Zealand Diploma in Health and Wellbeing (Practice/Applied Practice) Level 5.....	21-22
Certificate in Pharmacy (Introduction) Level 5.....	23-24

## Construction

New Zealand Diploma in Construction (Quantity Surveying Strand) Level 6.....	27-28
New Zealand Diploma in Building Surveying Level 6.....	29-30

## Information Technology

Advanced Software Testing Automation Level 7.....	33-34
Postgraduate Diploma in Software Testing Level 8.....	35-36

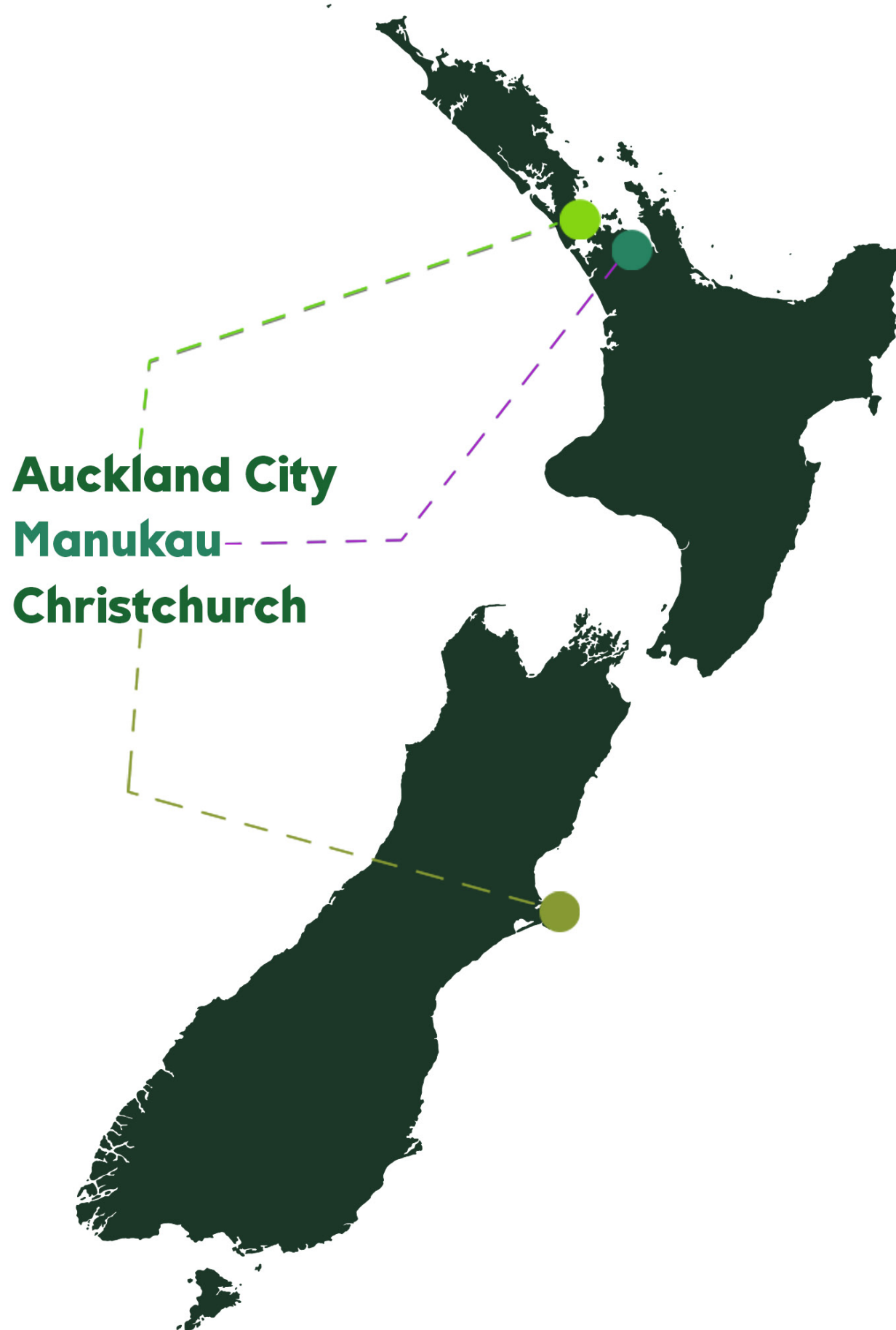
## Makeup Artistry

Fashion Makeup (Blended Mode) Level 3.....	39-40
--	-------

## Health & Safety

Overview of H&S Courses.....	43-44
Information.....	45-46





# AKA

EDUCATION GROUP



Take your pick from our variety of programmes and be assured that your best interest is our priority. At AKA Education Group, you are at the heart of all our initiatives and preparing you for the industry is our #1 priority.

All our providers foster a learning environment that enhances your educational and personal growth. Whichever programme you enrol in, when you are a student at AKA, you are part of a community that strives to make this world a better place.

We encourage you to develop your potential and set out on a career which fits your passion.



## Discover a Pacific Paradise ***Aotearoa (New Zealand)***

New Zealand's relaxed pace of life gives you the time to enjoy everything our vibrant modern cities have to offer. Enjoy live music, theatre, film, dance, free festivals or international sports fixtures, or hang out with your new friends at a cafe, restaurant or bar.

Most of our cities and towns are relatively small and uncrowded, making your daily commutes easier and faster than back home. Wherever you live, you won't be far from beaches, parks, walking trails and cycle tracks.

New Zealand consistently leads world in quality of life studies, and we have a great work-life balance. Kiwis believe in balancing a good day's work or study with recreation and time with family or friends, or enjoy hobbies and explore nature.

Kiwis are some of the most welcoming people that you will ever meet. There are just over five million people who reside in the country, and it is one of the safest places to live in the world. We are a multicultural and diverse nation, giving you all the reasons to make this home.

### **From the City of Sails to the Garden City**

AKA Education Group's provider campuses are located in Auckland City, Manukau and Christchurch. All our campuses are modern, spacious, and well-equipped with a welcoming and positive vibe. They are also easily accessible to students by public transport.



### **Cape Reinga**



Nestled at the northernmost tip of New Zealand's North Island, this natural wonder marks the dramatic meeting point of the Tasman Sea and the Pacific Ocean..





# Why study with us?

1. Our priority is YOU and for you to have the best education experience.
2. We are a group of 6 leading Category 1 & 2 providers of Healthcare, Pharmacy, Business, Makeup Artistry and English programmes.
3. Located in both the North and South Island.
4. Internationally recognised qualifications.
5. Each of our programmes are designed by industry experts.
6. Highly qualified teachers with industry experience, dedicated to helping you succeed.
7. Access to work placement/experience opportunities\*.
8. Find your passion while growing your potential.



## What makes us stand out?

- **Students who actively take part in lessons, working co-operatively, learn better. That's why the first part of our Learning/Teaching Experience is Learner Centredness.**

We follow a student-centred approach where the teacher acts as a facilitator rather than an instructor; where students construct knowledge for themselves rather than being told what to think; where students learn better and deeper by being actively engaged in working it out for themselves. In this way you both learn better and develop confidence in yourself and your skills.

- **Student Engagement**

In class we use approaches that promote active student engagement - no more boring lectures! We engage together actively, work as a team and have fun while learning.

- **Practical Application**

Of course, 'theory' is important, but the real focus has to be on how it is practically applied. With our programmes the focus is on what you can do, not just what you 'know'. Our practical focus means you are better prepared for working in your industry and more attractive to prospective employers.

- **Innovation in Teaching**

Using new approaches, blended learning, flipped classrooms, integrating technology to assist learning and engagement - we're always looking for more effective ways of teaching to help you learn better and improve your outcomes.



\* - Our Healthcare students for clinical placement as a part of the programme | Our makeup students get opportunities to work with the industry





AKA  
EDUCATION GROUP



# Domestic Funding



As a domestic student you may be eligible for Fees-Free provision, student loans and/or allowances. To confirm your eligibility, get in touch with our team or visit [www.feesfree.govt.nz](http://www.feesfree.govt.nz) and enter your National Student Number (NSN).

## Student loans & allowances

Studying is made easier with the support of the New Zealand Government. Which contributes to the cost of further education for eligible students. You can borrow money for tuition fees, course costs and living costs.

To avail of the above, you must be:

- a New Zealand citizen or
- a resident of New Zealand AND either;
- have been living in New Zealand for at least 3 years, and
- have held a residence class visa for 3 years, or
- be a refugee or protected person, or
- be sponsored into New Zealand by someone in your family who, at the time you were sponsored, was a refugee or protected person

For more information, please visit - [www.studylink.govt.nz](http://www.studylink.govt.nz); or parents and whanau: [parents.education.govt.nz/further-education/student-loans-and-allowances/](http://parents.education.govt.nz/further-education/student-loans-and-allowances/)

Our team is happy to help you with understanding your entitlements, just send us an email on [info@aka.ac.nz](mailto:info@aka.ac.nz) and we can go from there!







# International Students

## A friendly welcome awaits...

Settling in a new country, so different from your own, can be quite a challenge. We understand that and try our best to get you comfortable and settled as soon as possible. Our dedicated student services team, friendly staff and engaging faculty will have you feeling at home in no time at all!

A fun event is always around the corner at all the AKA providers with cultural days, campus activities, student events, and much, much more. Our aim is to provide high quality education and a fun-filled social life so students have a rewarding and exciting time.

### Code of Pastoral Care

AKA's International Education providers have all agreed to observe and be bound by the Code of Pastoral Care of Tertiary and International Students 2021 published by the New Zealand Qualifications Authority. Copies of the code are available on request from us or from the New Zealand Qualifications Authority website - [www.nzqa.govt.nz](http://www.nzqa.govt.nz).

### Student Fee Protection

In accordance with NZ Government regulations, your course fees are protected by Public Trust in a New Zealand Government guaranteed Student Fee Trust Account.

The Public Trust Fee Protect system ensures that your fees are secure for the full term of your studies. Students pay their tuition fees straight to the Public Trust account and the Public Trust pays the provider they choose to study with, monthly in arrears in accordance with an agreed payment schedule. Each student's fees are held separately and a print out of the account balance can be reviewed online or you may ask student services for a copy of the account.

For further information about living and studying in New Zealand, refer to these websites:

- Study in New Zealand - [www.studyinnewzealand.govt.nz](http://www.studyinnewzealand.govt.nz)
- NZQA Studying in NZ - [www.nzqa.govt.nz/studying-in-new-zealand](http://www.nzqa.govt.nz/studying-in-new-zealand)
- New Zealand Now - [www.newzealandnow.govt.nz](http://www.newzealandnow.govt.nz)
- Tourism New Zealand - [www.tourismnewzealand.com](http://www.tourismnewzealand.com)
- Get ready for New Zealand - <https://nzready.immigration.govt.nz/>
- Immigration New Zealand - [www.immigration.govt.nz/assist-migrants-and-students/assist-students](http://www.immigration.govt.nz/assist-migrants-and-students/assist-students)



# Your journey starts here

## ADMISSIONS

We welcome applications from all students with the potential to succeed at AKA. You will need to satisfy the relevant admissions criteria for the programme. We may also consider applications from those with combinations of qualifications and those with other relevant work experience.

## EQUALITY & DIVERSITY

We are committed to promoting diversity in all of its practices and activities. This is reflected in our multi-cultural student body and staff. The institute aims to establish an inclusive culture which welcomes applicants from all walks of life.

## ENROLMENT, FEES & SEMESTER DATES

More information about enrolment and semester dates is available online on our website - [www.aka.ac.nz](http://www.aka.ac.nz)

### Send an inquiry

[info@aka.ac.nz](mailto:info@aka.ac.nz)  
[www.aka.ac.nz](http://www.aka.ac.nz)

### Marketing team gets in touch with you

### Fill the application form

and get all the information you need as a domestic or international applicant

### Send us your documents

Filled in application form, certified copies of academic transcripts, passport

### Assessment of documents

Confirmation of meeting entry requirements

### Offer of place

You're in!

### Your growth

Start or upskill in your career!





# BUSINESS

- Diploma in Business Management - BRAND MANAGEMENT (Level 7)





# Diploma in Business Management

## BRAND MANAGEMENT (Level 7)

Delivered by:  Location: Auckland City

*This qualification will provide both New Zealand and Global businesses and organisations with graduates who can apply advanced business management knowledge and skills to be able to manage within a business management environment. In addition to advanced business management knowledge and skills, graduates with a specialisation in Brand Management will be able to design effective marketing programmes to build, measure and manage brand equity.*

Credits: 120 | Duration: 36 Academic + 2 break weeks + 4 weeks summer break depending on intake start date

**Qualification Gained** This programme leads to the Diploma in Business Management (specialisation in Brand Management) (Level 7)

- Core Papers**
- Strategic Management
  - Strategic Contemporary Marketing
  - People and Organisation
  - Financial management
  - Strategic Brand Management
  - Technology Based Branding
  - Operational Sales and Brand Evaluation
  - Information Management and Research.



### Entry Requirements

Applicants must provide evidence of:

- A Level 6 or higher qualification in Business (or equivalent) OR
- A degree in any other discipline OR
- A minimum of four years relevant industry experience in a Business related field, requiring knowledge equivalent to at least a Level 6 Business qualification. AND
- International students for whom English is not their first language, must also have an IELTS score of 6.0 (Academic) with no individual band lower than 5.5, or equivalent evidence of English Language proficiency in accordance with NZQA regulations.

### Study Requirements

Classes are held 2 days per week in person and 2 days per week online.

### Career Opportunities

Graduates may work as: Brand Manager, Associate Brand Manager, Marketing Manager, Assistant Brand Manager, Marketing Specialist, Social Media Marketing Manager, Event Co-Ordinator, Product Development Officer.





# HEALTHCARE

- Diploma in Pharmacy (Introduction) (Level 3)
- Certificate in Diversional Therapy & Community Health (Level 4)
- New Zealand Diploma in Health and Wellbeing (Practice/Applied Practice) (Level 5)
- Certificate in Pharmacy Technician (Level 5)





# Certificate in Pharmacy (Introduction)

(Level 3)

Delivered by:  **AGI** Location: Online  
Education That Builds Careers

*This programme aims to provide the pharmacy sector with graduates with underpinning knowledge and skills in pharmacy retail. Graduates will be able to work within a pharmacy in a non-dispensing role with the supervision of a pharmacist.*

*Credits: 40 | Duration: 15 teaching weeks + 3 study break weeks (plus 4 weeks summer break depending on intake start date)*

**Qualification Gained**

This programme leads to the New Zealand Certificate in Pharmacy (Introduction to Pharmacy Practice) (Level 3)

**Core Papers**

- CPI 1.1 Safe Practice
- CPI 1.2 Pharmacy related products and services
- CPI 1.3 Pharmacy Assistant (Clinical)



**Programme Outcomes**

Graduates will be able to:

- Work ethically and professionally as required by the pharmacy codes and standards. Recognise and respond to signs of vulnerability and abuse in a health or wellbeing setting.
- Interact with pharmacy team members and customers/patients to ensure the provision of culturally appropriate customer service.
- Apply legislation relevant to their workplace.
- Determine if it is safe and appropriate to provide pharmacy-related products and services or advice to customers/patients and know when to refer to a pharmacist.
- Carry out a range of support activities within the pharmacy.
- Provide first aid.
- Perform calculations using appropriate information technology tools for point of sale transactions and retail operations.

**Study Requirements**

Online learning requires completion of 8 hours per week of online engagement activities that are facilitator-led, and at least 12 hours per week of online reading, engaging with videos, learning activities, and formative assessment activities as scheduled.

This programme includes a 5 week Clinical Placement that is normally scheduled over 3 days per week.

**Entry Requirements**

**Available only to NZ Domestic Applicants**

Learners enrolling must hold one of the following qualifications, or equivalent knowledge, skills and experience:

- At least 18 years of age at programme start date
- 8 credits at NCEA Level 1 in English (4 in reading, 4 in writing) or equivalent.
- Minimum of 3 years secondary education.
- There are no minimum academic requirements for applicants 20 years of age and over



**Fees-Free Available\***

For eligible students





# Certificate in Diversional Therapy & Community Health

(Level 4)

Delivered by:  **KAURI** Location: Auckland City  
TE KURA KAURI O AOTEAROA

*This programme aims to provide skills and knowledge that facilitate professional knowledge and practice in communication with clients, knowledge of person-whanau interconnectedness, self-awareness of own role and purpose, and active contribution to professionalism. Diversional Therapy and Community Health Work specialisations provide contexts for the programme.*

*Credits: 180 | Duration: 60 teaching weeks + 12 study break weeks | Clinical Placement: 300 hours*

### Qualification Gained

This programme leads to the NZ Certificate in Health & Wellbeing (Social & Community Services) with strands in Community Facilitation and Community Health Work (Level 4)

### Career Opportunities

Graduates will be able to work in the following areas: Diversional Therapist, Recreational Therapist, Activities Officer, Aged or Disabled Care Worker, Special Care Worker.

### Highlights

Based on the Care and Support Workers (Pay Equity) Settlement Agreement, graduates who successfully complete this program start with a minimum wage of \$28.25 NZD, compared to the standard minimum wage of \$23.50 NZD.

### Core Papers

- DTCH 1.1 Communication
- DTCH 1.2 Māori Tangata Whenua
- DTCH 1.3 Personal Leadership
- DTCH 2.1 Currency of Practice
- DTCH 2.2 Diversional Therapies
- DTCH 2.3 Activity Quality Management
- DTCH 3.1 Ethical Support
- DTCH 3.2 Challenging Behaviour
- DTCH 3.3 Community Health Promotion
- DTCH 4.1 Supporting Autonomy
- DTCH 4.2 Clinical Activities
- DTCH 4.3 Clinical Professionalism

### Entry Requirements

#### DOMESTIC APPLICANTS

- 18 years of age at programme start date.
- 48 NCEA credits at Level 2 (including a minimum of 12 credits in each of the three subjects and 4 credits in English and 4 credits in writing).
- There are no minimum academic requirements for applicants 20 years of age and over.

#### INTERNATIONAL APPLICANTS

- 18 years of age at programme start date.
- Year 12/13 High School qualification equivalent or higher.
- IELTS 5.5 with no band less than 5.0 (or equivalent as per the English Language Proficiency Requirements for International students determined by NZQA.)
- Tertiary graduates and health care professionals who have experience in interacting with patients are preferred.

### What will I learn?

We value holistic education and guidance. This programme includes classroom-based learning, self-directed learning, and clinical placement. At the end of this programme, you will be able to:

- Engage and communicate with people, family and/or whānau accessing social and community services in a manner which respects their socio-cultural identity, experiences, and self-knowledge.
- Relate the history of Māori as tangata whenua and knowledge of person-whanau interconnectedness to own role in a health and well-being setting.
- Display self-awareness reflective practice and personal leadership in a health and wellbeing setting.
- Actively contribute to a culture of professionalism, safety, and quality in a health and wellbeing setting.
- Relate the purpose and impact of own role to the aims of the wider health and wellbeing sector.
- Work alongside people, family and/or whānau in a community facilitation setting to support autonomy by using tools and strategies to identify goals, address barriers and achieve aspirations.





# New Zealand Diploma in Health & Wellbeing

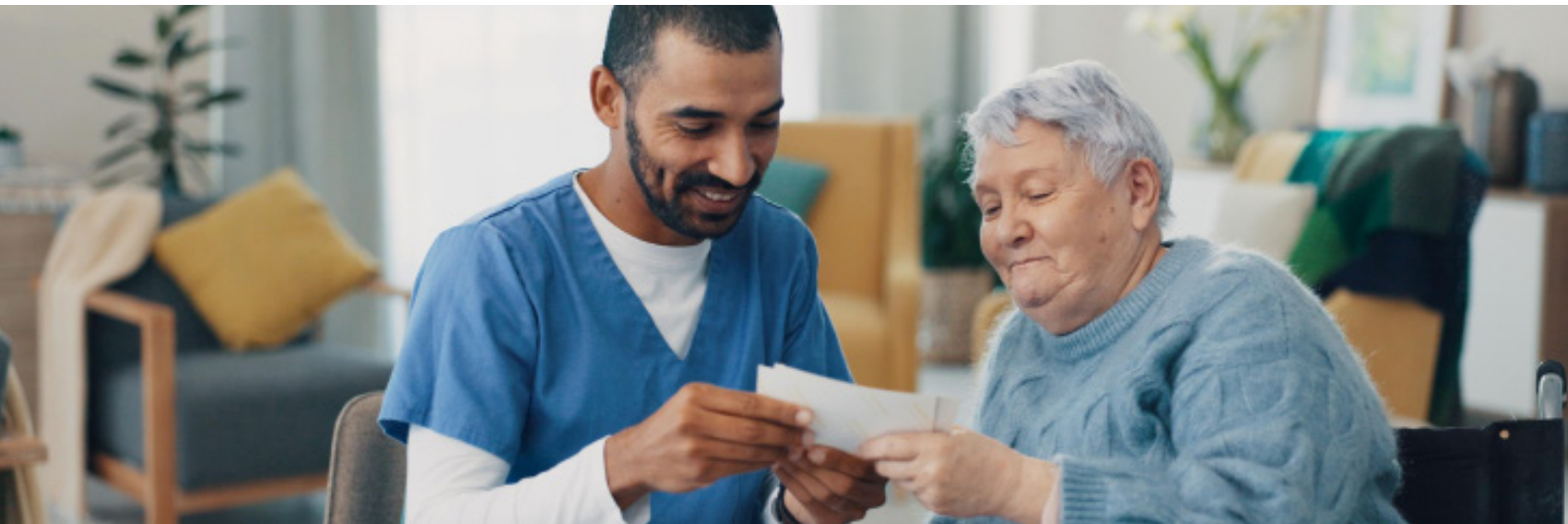
(Practice/Applied Practice)  
(Level 5)



Delivered by:  AGI Education That Builds Careers Location: Auckland City, Manukau, Christchurch

*Support whānau and the community by becoming a part of New Zealand's Healthcare Industry. The aim of this programme is to equip learners with the knowledge and skills to enter the health and wellbeing sector across a range of disciplines to support people from diverse contexts and achieve their health and wellbeing aspirations*

*Credits: 120 | Duration: 44-48 teaching weeks + 2 study break weeks | Clinical Placement: 300 hours*



## Qualification Gained

This programme leads to the New Zealand Diploma in Health and Wellbeing (Practice/Applied Practice) (Level 5)

## Career Opportunities

Graduates of this qualification will have the skills and knowledge required to work in vocational roles, disciplines or contexts such as: Consumer Advocacy, Disability Practice; Social Services, Counselling, Iwi Services, Mental Health Support, Youth Work in a range of settings such as non-governmental organisations, Justice/Corrections, social services, residential and community care and support services. Example of job titles include Residential care Worker, Family Support Worker, Disability Service's Worker, Community Health Assistant, Healthcare Assistant, Kaiawhina Hauora, Mental Health Support Worker, etc.

## Highlights

Based on the Care and Support Workers (Pay Equity) Settlement Agreement, graduates who successfully complete this program start with a minimum wage of \$28.25 NZD, compared to the standard minimum wage of \$23.50 NZD.

## Core Papers

- DHSM 501 Ageing & disability in Healthcare
- DHSM 502 Determinants of Health & Wellbeing in New Zealand
- DHSM 503 Principles and concepts of Māori Health and Wellbeing
- DHSM 504 Dementia
- DHSM 505 Health care support practices
- DHSM 506 Manual handling techniques
- DHSM 507 Health care practices & strategies
- DHSM 508 Evaluation of Healthcare practice

## Entry Requirements

Recommended to hold one of the following qualifications, or equivalent knowledge, skills and experience.

- Have completed Certificate in Healthcare Level 3; OR
- Successful completion of NCEA Level 2 or 3; OR
- Other equivalent education; OR
- Appropriate work experience in the health-care sector

## INTERNATIONAL APPLICANTS

- IELTS 5.5 with no band less than 5.0 (or equivalent as per the English Language Proficiency Requirements for International students determined by NZQA).

## What will I learn?

Graduates will demonstrate knowledge, skills and understanding of the practices, theories and principles required to be effective healthcare and wellbeing professionals. They will also be equipped to: the skills, attitudes and values as given below:

- Respond to the health and wellbeing aspirations of people from diverse contexts.
- Critically evaluate and apply evidence-based practices to support people to meet their health and wellbeing aspirations.
- Demonstrate high awareness of the socio-cultural, economic and political factors impacting the wider health and wellbeing environment to provide responsive support practices.
- Critically analyse and apply a range of evidence-based practices informed by knowledge of te ao Māori to respond to the health and wellbeing aspirations of tangata whenua.
- Critically reflect on and evaluate own support practice to achieve continuous improvement.
- Apply advanced strategies to respond to people's personal needs, personal goals, desired outcomes, potential resources in health or wellbeing setting.
- Critically analyse and respond to workplace responsibility, health and safety strategies and regulations in health or wellbeing setting.
- Analyse determinants of health that contribute to health status of population groups in New Zealand







# Certificate in Pharmacy Technician

(Level 5)

Delivered by:  **KAURI** Location: Auckland City

The programme aims to provide mature domestic and international learners with skills & qualifications which will enable them to work in New Zealand as a pharmacy technician.

Credits: 149 | Duration: 62 teaching weeks + 8 study break weeks | Clinical Placement: 440 hours

### Qualification Gained

This programme leads to the NZ Certificate in Pharmacy (Pharmacy Technician - Core) (Level 4) and the NZ Certificate in Pharmacy (Pharmacy Technician - Advanced) (Level 5)

### Career Opportunities

Graduates will be able to work in a dispensing pharmacy under the direct supervision of a pharmacist. You will be able to work in a range of dispensary related roles including those in community, hospital, industrial and educational settings in pharmacy. Students may pathway to further learning such as the NZ Diploma in Pharmacy (Pharmacy Technician - Specialist) (Level 6).

### Core Papers

- PHT 1.1 Pharmtech
- PHT 1.2 Pharmtech
- PHT 1.3 Pharmtech
- PHT 1.4 Pharmtech
- PHT 2.1 Pharmtech
- PHT 2.2 Pharmtech
- PHT 2.3 Pharmtech
- PHT 2.4 Pharmtech
- PHT 3.1 Pharmtech
- PHT 3.2 Pharmtech
- PHT 3.3 Pharmtech

### Entry Requirements

#### DOMESTIC APPLICANTS

- 18 years of age at programme start date.
- Level 3 New Zealand Certificate in Pharmacy (Introduction to Pharmacy Practice) (Level 3) qualification, OR
- A domestic or international bachelor's degree qualification in a health related field, OR
- Comparable pharmacy qualification which will be determined through a review of the transcript of learning.

#### INTERNATIONAL APPLICANTS

- 18 years of age at programme start date.
- Level 3 New Zealand Certificate in Pharmacy (Introduction to Pharmacy Practice) (Level 3) qualification, OR a domestic or international bachelor degree qualification in a health related field, OR comparable pharmacy qualification which will be determined through a review of the transcript of learning.
- IELTS 5.5 with no band less than 5.0 (or equivalent as per the English Language Proficiency Requirements for International students determined by NZQA).

Tertiary graduates and health care professionals who have experience in interacting with patients are preferred.

### What will I learn?

We value holistic education and guidance. This programme includes classroom-based learning, self-directed learning, and clinical placement. At the end of this programme, you will be able to:

- Communicate with customers
- Apply the relevant pharmacy legislation and regulations.
- Apply an advanced level of knowledge of human anatomy, physiology and medicine used in the treatment of health disorders.
- Understand the use of dispensing medicine services.







# CONSTRUCTION

- New Zealand Diploma in Construction with strands in Quantity Surveying (Level 6)
- New Zealand Diploma in Building Surveying (Level 6)





# New Zealand Diploma in Construction

(Quantity Surveying Strand) (Level 6)



Location: Auckland City

*The programme aims to instil theoretical knowledge and practical skills so learners have the capacity to handle residential and commercial building projects by assisting construction management under the supervision of a qualified and experienced practitioner.*

Credits: 240 | Duration: 75-80 weeks

## Qualification Gained

This programme leads to the New Zealand Diploma in Construction (Level 6) with strand in Quantity Surveying.



## Core Papers

- Legislation and Regulatory Frameworks
- Communication and Digital Technologies
- Materials and Structural Principles
- Environmental Impact
- Contracts Management - I
- Contracts Management - II
- Construction Management - I
- Construction Management - II
- Measurement for Small Buildings
- Measurements for Medium & Large buildings
- Cost Planning - I
- Cost Planning - II
- Estimation for Buildings



## Entry Requirements

Learners are required to demonstrate adequate skills – both literacy & numeracy (12 credits in Maths minimum & 12 literacy credits at NCEA Level 1 minimum), and/or have a relevant industry experience or a demonstrable relevant & equivalent knowledge and skills.

## INTERNATIONAL APPLICANTS

- Additionally, IELTS 6 with no band less than 5.5 (or equivalent as per the English Language Proficiency Requirements for International students determined by NZQA).

## What will I learn?

On successfully completing the programme, learners will be able to:

- Administer and manage construction contracts using effective communication with different stakeholders, quantifying and documenting contract terms and reporting progress in accordance with contractual obligations and industry best practice.
- Comply with and operate within the New Zealand legislation and regulations governing the building and construction industry.
- Evaluate and select materials and finishes for building projects taking into consideration sustainability and the impact on the built environment.
- Analyse and evaluate construction for foundations and substructure, passive fire protection, the structure for a specific design, the envelope, and the interior for small, medium and large buildings.
- Analyse, plan, monitor and administer construction contracts including evaluation of tender submissions, preparing payment claims and payment certificates, contract variations and time adjustment claims.
- Formulate procurement processes that comply with legislative requirements and ethical considerations, conduct risk analysis and risk mitigation, and develop a tender bid proposal for a medium scale construction project.
- Conduct and prepare feasibility studies and determine the viability of undertaking projects.
- Develop preliminary budget and cost planning documentation for small and medium building projects.
- Estimate costs for inclusion in tenders for small, medium and large building projects.
- Assemble quantity surveying documentation and measure schedules of quantities from project information for small, medium and large buildings





# NZ Diploma in Building Surveying

(Level 6)

Delivered by:  Location: Auckland City

The aim of this programme is to enable learners to develop the knowledge and skills to work as a building surveyor or in related areas such as a building consultant, building inspector or compliance officer. The programme is targeted for those who want to begin or further their career in building surveying.

Credits: 240 | Duration: 80 weeks

**Qualification Gained** This programme leads to the New Zealand Diploma in Building Surveying (Level 6).

## Core Papers

- BS600: Learning & Regulatory Frameworks
- BS601: Building Consent Authority Environment
- BS 602: Documentation Systems
- BS603: Plan Processing for Small & Large Buildings
- BS604: Professional Communication
- BS605: Building Materials, Technology & Construction
- BS606: Risk Management
- BS607: Building Inspection & Evaluation I
- BS608: Certification Process
- BS609: Building Inspection & Evaluation II

## Entry Requirements

Learners must demonstrate sufficient literacy & numeracy skills with minimum NCEA Level 1 or above qualification, able to demonstrate equivalent knowledge and skills, or have suitable industry experience.

### INTERNATIONAL APPLICANTS

- Additionally, IELTS 6 with no band less than 5.5 (or equivalent as per the English Language Proficiency Requirements for International students determined by NZQA).

## What will I learn?

On successfully completing the programme, learners will be able to:

- Comply with and operate within the New Zealand legislation and regulations governing the building and construction industry
- Apply the fundamental concepts of construction science through an examination of the physical properties and mechanics of construction materials and the physics of heat, fluids, light sound and electricity when determining compliance with the New Zealand Building Code
- Apply appropriate principles, tools and methods to communicate and resolve complex problems in a building regulatory environment
- Diagnose problems with existing buildings and compile an evidence portfolio to support enforcement activities relating to the Building Act
- Use appropriate policies, procedures, and systems applicable to building surveying practice to ensure compliance with the Building Act
- Describe, explain, evaluate, and apply building surveying practices to determine compliance with the New Zealand Building Code
- Administer and manage building inspection to confirm compliance with the New Zealand Building Code. On completing this programme, graduates will be awarded the New Zealand Diploma in Building Surveying (Level 6) [3030-2].







# INFORMATION TECHNOLOGY

- Advanced Software Testing Automation (Level 7)
- Postgraduate Diploma in Software Testing (Level 8)





# MICROCREDENTIAL

# Advanced Software Testing Automation

(Level 7)

Delivered by:  AGI Education That Builds Careers Location: Auckland City

*The Advanced Software Testing Automation (ASTA) micro-credential aims to equip ICT industry professionals or graduates with the knowledge and skills necessary for them to work as testing automation professionals in the ICT industry. Students will gain a deep understanding of testing automation fundamentals and develop proficiency with various contemporary testing automation tools and frameworks. Additionally, they will learn best practices for testing automation, including how to integrate this within organisational and project contexts and processes.*

*Duration:*

- 150 hours (120 hours of contact / 30 hours of self-directed learning).
- This is delivered over 8 x 2-day workshops (total of 15 hours contact per workshop). These are available on weekends only.

*Mode of Completion:*

- Mode 1: Workshops 1-8 will be scheduled 4-weeks apart on weekends.
- Mode 2: Workshops will be scheduled 2-weeks apart on weekends.
- Mode 3: Only offered for corporate training and tailored to their client needs.

## Workshops Included

- *Workshop 1:* Basics of testing automation
- *Workshop 2:* Selenium-based testing automation for web applications
- *Workshop 3:* Functional testing automation using Katalon Studio
- *Workshop 4:* Automated integrated testing using Postman
- *Workshop 5:* Mobile testing automation using Appium
- *Workshop 6:* Performance testing automation using JMeter
- *Workshop 7:* Agile testing automation
- *Workshop 8:* Defect management using Jira



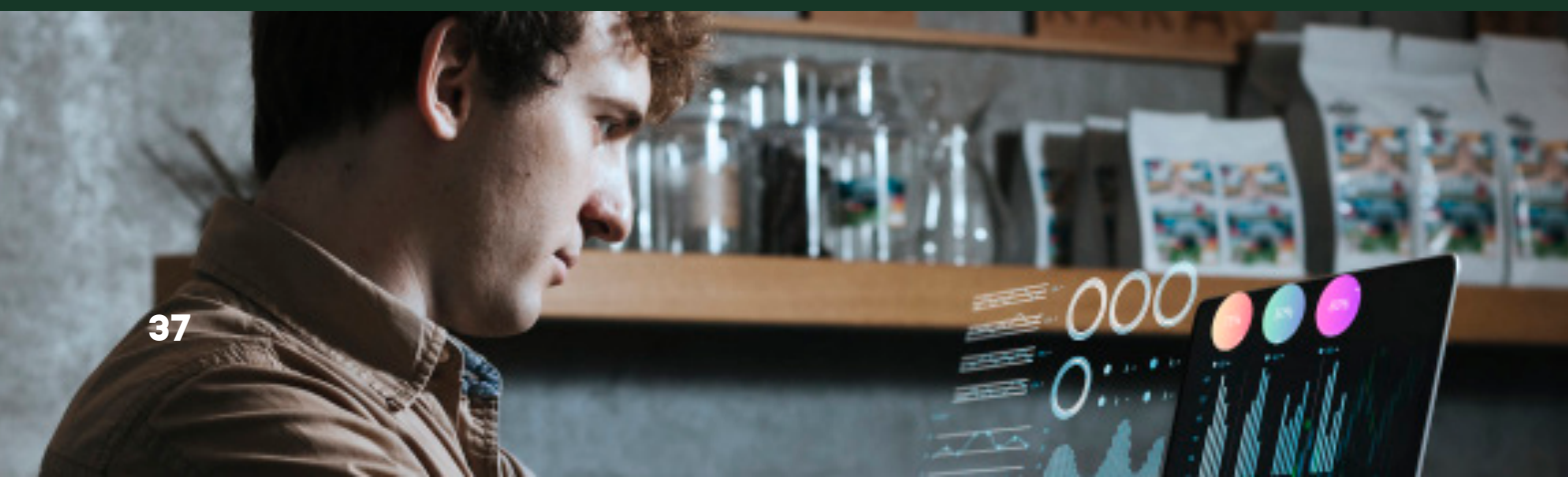
## Entry Requirements

- The micro-credential is geared for the working professional. The key entry criteria are that candidates be actively involved in the IT sector or possess at least 12 months of recent (within the last three years) professional experience in the IT sector. Candidates who do not meet these criteria will be allowed entry if they meet the following requirements: Bachelor or higher IT degree.
- For International Applicants, IELTS 5.5 with no band less than 5 (or equivalent as per the English Language Proficiency Requirements for International students determined by NZQA).

## What will I learn?

Upon completion of the ASTA micro-credential, learners will be able to:

- Demonstrate a comprehensive understanding of testing automation fundamentals, including benefits, limitations, and tools and frameworks available.
- Create and execute automated tests for web, mobile, and API applications using various automation tools such as Selenium, Katalon Studio, Postman, and Appium.
- Apply best practices for testing automation, including integration with the Continuous Integration/Continuous Delivery (CI/CD) pipeline, maintaining long-term test maintainability, incorporating testing automation in Agile projects, and optimising tests for accurate and reliable results.







# Postgraduate Diploma in Software Testing

(Level 8)

Delivered by:  **AGI** Location: Auckland City  
Education That Builds Careers

*The programme is designed for people who are existing Information technology professionals, those who have an interest in working in the Information technology sector and have acquired relevant qualifications. Postgraduate Diploma in Software Testing (PGDST) graduates will demonstrate and apply advanced specialist knowledge and skills in the testing of software involving complex environments, allowing organisations to build accurate, effective, robust, scalable and usable software applications or services. They will be able to act professionally and ethically while researching, evaluating, designing and implementing contemporary technology, tools and techniques for software testing to bring efficiencies in an IT organisation environment.*

Credits: 120 | Duration: 44-48 teaching weeks + 2 study break weeks

## Qualification Gained

This programme leads to the Post Graduate Diploma in Software Testing (Level 8).

## Career Opportunities

Once awarded the PGDST, a graduate will be able to take on a role as a: Software Tester; Test Analyst; Test Lead/ Technical Test Lead; Testing Consultant; Business Analyst; Test Management; Test Engineer (manual testing, automation testing, performance testing); Automation Tester; Performance Tester; Quality Assurance Analytics or Quality Engineers or Test Analysts; Tester to developers - Software developer; Testing framework maintainer



## Core Papers

- PGDST801 Software Testing Life Cycle
- PGDST802 Testing Tasks and Techniques
- PGDST803 Test Management & Test Governance
- PGDST804 Specialized Testing
- PGDST805 Test Management Tool
- PGDST806 Functional Automation Testing
- PGDST807 Performance Testing
- PGDST808 Applied Industry Project

## Entry Requirements

### DOMESTIC APPLICANTS

- Bachelor or higher IT degree with programming knowledge; and/or
- Subject to the regulations of the award, those who have been able to demonstrate equivalent practical, professional or educational experience in an IT-related field may be granted admission. In such case the candidate will be interviewed by Head of Computing Department (HOD) and the enrolment depends on the discretion of HOD.

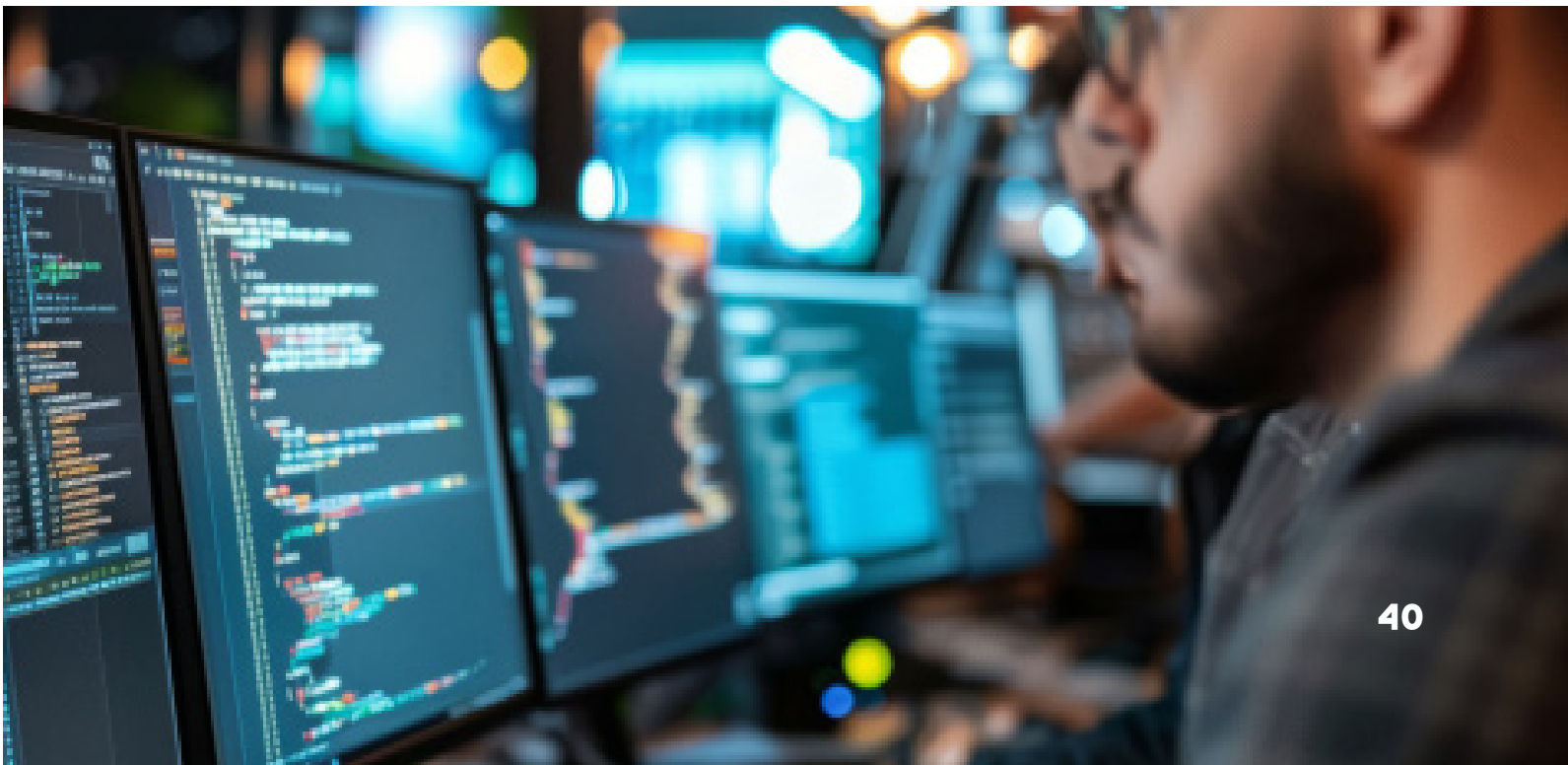
### INTERNATIONAL APPLICANTS

- Bachelor or higher IT degree with the knowledge of programming; and
- IELTS 6.5 with no band less than 6.0 (or equivalent as per the English Language Proficiency Requirements for International students determined by NZQA).

## What will I learn?

After successful completion of this diploma, graduates will be able to:

- Demonstrate advanced and comprehensive knowledge and understanding of the theoretical and practical aspects of the Software Testing Body of Knowledge within a variety of project, technological and organisational contexts.
- Collaborate effectively with a variety of stakeholders, including software development teams, to plan, design, execute, control, monitor and review software testing activities.
- Analyse policies, standards, procedures and current trends in software testing, and demonstrate an ability to manage complex software testing projects.







# MAKEUP ARTISTRY

- Fashion Makeup (Blended Mode) (Level 3)





# Fashion Makeup

Blended Mode (Online + Face to Face) (Level 3)

Delivered by:  Location: Online

Get started on your journey as a Makeup Artist. Elevate your skills, broaden your horizons, and make your mark in the dynamic world of fashion and beauty.

Credits: 60 | Duration: 17 weeks

### Qualification Gained

This programme leads to the New Zealand Certificate in Makeup and Skin Care (Introduction) (Level 3)

### Commitment Required

- Online:
- 4 hours of online facilitator engagement per week (Mon and Wed 7pm-9pm)
  - 15 hours of self-paced online learning activities and skills practice per week
- Face to face:
- 4 x 2 day workshops (face to face) – scheduled to occur every 4th weekend (Sat 9am-5pm & Sun 9am-4pm)
- Self-directed:
- 13 hours of self-directed study per week

### Entry Requirements

- Must be 16 years or older
- Must be a New Zealand Citizen or Resident
- Demonstrate proficient use and understanding of spoken and written English



### What will I learn?

- Tools and Equipment and Hygiene
- Colour theory, face shapes, and corrective techniques
- Structure of face, skin types, skin conditions, and analysis
- Face charts
- Beauty makeup application: Client Natural, Client Elegant, Client Sultry, Ball Makeup, Bridal Makeup, Male Makeup, Mature Makeup
- Introduction to Fashion makeup: Soap Brows, High Gloss Makeup, Fashion Editorial, Bridal Editorial
- Sales techniques
- Personal development & getting established in the industry
- First Aid
- Course includes 4 full professional photoshoots of key looks.

### Highlights

- Professional Makeup Kit
- Creative Portfolio
- Work Experience Opportunities
- Recognised NZQA Certificate







# HEALTH & SAFETY







**We aim to Build and Upskill the Modern Worker of Aotearoa.**

Delivered by: **ccta**  
CC TRAINING ACADEMY



### **Asbestos Courses**

- Friable Asbestos Removal Course (Class A)
- Non-Friable Asbestos Removal Course (Class B)
- Asbestos Supervisor Course
- Asbestos Assessor Course
- Asbestos Awareness Course
- Asbestos Management and Surveying (Micro-credential)

### **Working at Heights**

- Working at Heights Training
- Heights Refresher Course

### **Confined Space**

- Confined Space Training
- Confined Space Refresher Course

### **Mobile Elevated Working Platform (MEWP) Training Courses**

- MEWP Training
- MEWP Refresher Course

### **Health & Safety Courses**

- Construction Safety Passport
- Permit to Work - Receiver
- Health and Safety Representative
- Basic First Aid
- Advanced First Aid
- New Zealand Certificate in Workplace Health & Safety (Level 4)





# Information

## QUALITY ASSURANCE STATEMENT

NZQA assesses the standard of education for tertiary education organisations through a regular system of external evaluation and review (EER). Through periodic EER, tertiary education organisations are held accountable to their students, employers, funders, quality assurance bodies and other interested parties. Please go to <http://www.nzqa.govt.nz> and look for our schools. See our latest EER reports from NZQA. Please also refer to our individual school websites to read about our support and guidance for international students.

## CODE OF PRACTICE FOR THE PASTORAL CARE OF TERTIARY & INTERNATIONAL LEARNER 2021

Our schools have agreed to observe and be bound by the code of Practice for the Pastoral Care of Tertiary and International learners published by the Ministry of Education, and managed by the Code Administrator, New Zealand Qualification Authority. Copies of the Code are available on request from this institution or you can find it here: <https://www.education.govt.nz/further-education/information-for-tertiary-students/code-of-practice-pastoral-care-domestic-tertiary/>

## RECRUITMENT AGENT BEHAVIOUR

Our Recruitment Agents have been carefully selected and screened to become trusted partners of AKA Education Group Schools. Our Recruitment Agents have also agreed to observe and be bound by the Code of Practice. This includes:

- providing international students with reliable information and advice about studying, working, and living in New Zealand; and
- acting in an ethical manner with integrity and professionalism towards prospective international students.

Any concerns regarding the behaviour of a Recruitment Agent, should be notified to AKA.

## HEALTH & TRAVEL INSURANCE

International students (including group students) must have appropriate and current medical and travel insurance while studying in New Zealand.

## ACCIDENT INSURANCE

The Accident Compensation Corporation provides accident insurance for all New Zealand citizens, residents and temporary visitors to New Zealand, but you may still be liable for all the other medical and related costs. Check for more information at <http://www.acc.co.nz>

## ELIGIBILITY FOR HEALTH SERVICES

Most international students are not entitled to publicly funded health services within New Zealand. If you receive medical treatment during your visit, you may be liable for the full costs of that treatment. Full details on entitlements to publicly-funded health, service are available through the Ministry of Health and can be viewed on their website at: <http://www.moh.govt.nz>







**Auckland City**



**Henderson**



**Christchurch**



**Manukau**





**#UpTeAKA**

