

PROSPECTUS 2023-24



Te aka (the vine) naturally grows upwards but needs support to climb towards the light. Our mission is to be the support that allows our students to grow, develop and flourish, creating a better future for themselves, their whanau and their society.

Growing potential



Index

About AKA Education Group.....	1-2
Our Providers.....	3-4
Our locations.....	5-8
Why study with us?.....	9-10
Domestic Funding.....	13-14
International Students.....	15-16
Your journey starts here	17-18

Healthcare

Certificate in Disability Support (Level 3).....	21-22
Certificate in Diversional Therapy and Community Health (Level 4).....	23-24
New Zealand Diploma in Healthcare, Aging and Disability Services (Applied Practice) (Level 5).....	25-26

Pharmacy

Certificate in Pharmacy (Introduction) (Level 3).....	31-32
Certificate in Pharmacy Technician (Level 5).....	33-34

Online

Certificate in Disability Support (Level 3).....	39-40
Certificate in Pharmacy (Introduction) (Level 3).....	41-42

Business

NZ Diploma in Business (Leadership and Management) (Level 6).....	45-46
Diploma in Business Management (Brand Management) (Level 7).....	47-48
Diploma in Business Management (Business Information Technology) (Level 7).....	49-50
Diploma in Business Management (Digital Marketing) (Level 7).....	51-52

Makeup Artistry

Certificate in Fashion Makeup (Level 3).....	57-58
Certificate in Advanced Fashion & Creative Media Makeup (Level 4).....	59-60
School Holiday Programme.....	61-62
Makeup Workshops.....	63-64

FAQs	67-68
-------------------	-------





Tēnā koe

Welcome to AKA Education Group! If you are planning to set foot on a journey to a successful future and embrace growth - we'd be glad to be of assistance. We bring together four of New Zealand's leading Category 1 and 2, Private Tertiary Providers: Alpha Educational Institute, Kauri Academy, AGI Education and Samala Robinson Academy..

Combining proven expertise and outstanding learner outcomes in Healthcare, Pharmacy, Business Management, Makeup Artistry and Academic/General English preparation, we have come together with a vision to grow and empower your potential and enable you to make a difference in the lives of your whanau and community.

At AKA Education Group we put our students at the heart of everything we do, engaging and nurturing our students and maintaining a focus on the ability to 'do' rather than just 'know'. In this way we guide and support our students on their journeys into their chosen careers.

We look forward to introducing you to a world of possibilities for you to venture into and see you grow your potential.

Alpha Educational Institute (AEI) established, and campus opened in Christchurch, NZ

Samala Robinson Academy established, campus opened in Auckland, NZ and commences delivery of Makeup programmes

AGI Education commences delivery of Healthcare programmes

Kauri Academy is the first provider in NZ to offer training in Diversional Therapy

AEI opens campus in Auckland, NZ and commences delivery of Business Programmes

Kauri Academy opens campus in Christchurch, NZ

AKA Education Group is established

1995

2001

2009

2013

2017

2019

2021

1996

2004

2011

2015

2017

2020

2022

AEI commences delivery of English Language programmes

AGI Education established, campus opened in Auckland, NZ and commences delivery of English Language and Business programmes

Kauri Academy established and campus opened in Auckland, NZ

Kauri Academy introduces Pharmacy programmes

AGI is approved for domestic funding and commences delivery to domestic students

AGI opens campus in Manukau, NZ

SRA opens campus in Manukau, NZ

Our Providers

Auckland City
Manukau
Christchurch

AKA
EDUCATION GROUP



Take your pick from our variety of programmes and be assured that your best interest is our priority. At AKA Education Group, you are at the heart of all our initiatives and preparing you for the industry is our #1 priority.

All our providers foster a learning environment that enhances your educational and personal growth. Whichever programme you enrol in, when you are a student at AKA - you are part of a community that strives to make this world a better place.

We encourage you to develop your potential and set out on a career which fits your passion.

Discover a Pacific Paradise

New Zealand

New Zealand's relaxed pace of life gives you the time to enjoy everything our vibrant modern cities have to offer. Enjoy live music, theatre, film, dance, free festivals or international sports fixtures, or hang out with your new friends at a cafe, restaurant or bar.

Most of our cities and towns are relatively small and uncrowded, making your daily commutes easier and faster than back home. Wherever you live, you won't be far from beaches, parks, walking trails and cycle tracks.

New Zealand consistently leads world in quality of life studies, and we have a great work-life balance. Kiwis believe in balancing a good day's work or study with recreation and time with family or friends, or enjoy hobbies and explore nature.

Kiwis are some of the most welcoming people that you will ever meet. There are just over five million people who reside in the country, and it is one of the safest places to live in the world. We are a multicultural and diverse nation, giving you all the reasons to make this home.



From the City of Sails to the Garden City

AKA Education Group's provider campuses are located in Auckland City, Manukau and Christchurch. All our campuses are modern, spacious, and well-equipped with a welcoming and positive vibe. They are also easily accessible to students by public transport.

Our favourite corners...

All our campuses overlook parks and/or city buildings, giving us the best of both worlds. Spacious class rooms with high quality modern furniture, big breakout areas for students with easy access to online resources, our facilities are designed to give you the best learning experience.

Our suggestion to you would be to go out and about to experience the city the you live in! We're sure you will have a wonderful time...



Our Locations



Why study with us?

1. Our priority is YOU and for you to have the best education experience.
2. We are a group of 4 leading Category 1 & 2 providers of Healthcare, Pharmacy, Business, Makeup Artistry and English programmes.
3. Located in both the North and South Island.
4. Internationally recognised qualifications.
5. Each of our programmes are designed by industry experts.
6. Highly qualified teachers with industry experience, dedicated to helping you succeed.
7. Access to work placement/experience opportunities*.
8. Find your passion while growing your potential.



Reasons why!



What makes us stand out?

- ✿ **Students who actively take part in lessons, working co-operatively, learn better. That's why the first part of our Learning/Teaching Experience is Learner Centredness.**

We follow a student-centred approach where the teacher acts as a facilitator rather than an instructor; where students construct knowledge for themselves rather than being told what to think; where students learn better and deeper by being actively engaged in working it out for themselves. In this way you both learn better and develop confidence in yourself and your skills.

- ✿ **Student Engagement**

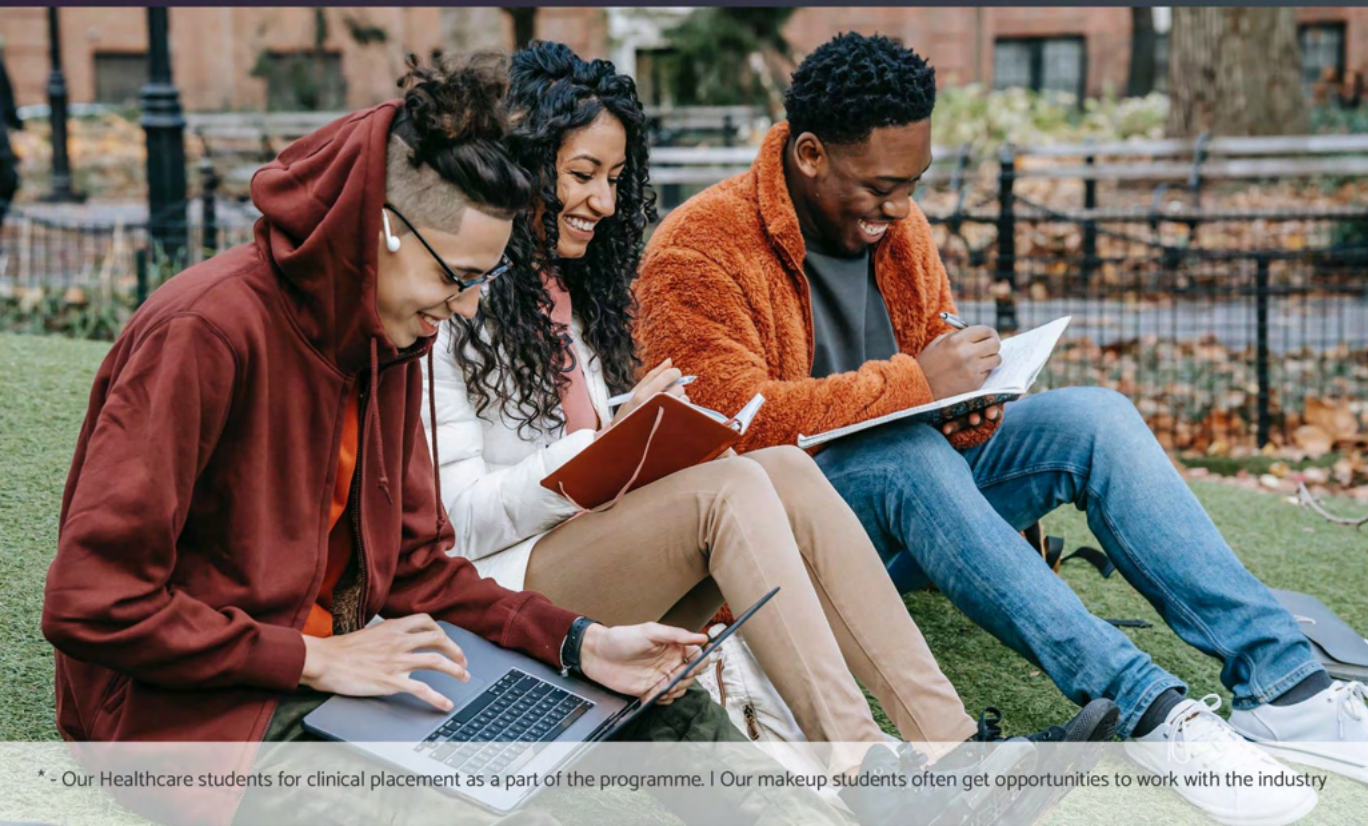
In class we use approaches that promote active student engagement - no more boring lectures! We engage together actively, work as a team and have fun while learning.

- ✿ **Practical Application**

Of course, 'theory' is important, but the real focus has to be on how it is practically applied. With our programmes the focus is on what you can do, not just what you 'know'. Our practical focus means you are better prepared for working in your industry and more attractive to prospective employers.

- ✿ **Innovation in Teaching**

Using new approaches, blended learning, flipped classrooms, integrating technology to assist learning and engagement - we're always looking for more effective ways of teaching to help you learn better and improve your outcomes.





Domestic Funding



As a domestic student you may be eligible for Fees-Free provision, student loans and/or allowances. To confirm your eligibility, get in touch with our team or visit www.feesfree.govt.nz and enter your National Student Number (NSN).

Student loans & allowances

Studying is made easier with the support of the New Zealand Govt. The government contributes to the cost of further education for eligible students. You can borrow money for tuition fees, course costs and living costs.

To avail of the above, you must be:

- a New Zealand citizen or
- a resident of New Zealand AND either;
- have been living in New Zealand for at least 3 years, and
- have held a residence class visa for 3 years, or
- be a refugee or protected person, or
- be sponsored into New Zealand by someone in your family who, at the time you were sponsored, was a refugee or protected person

For more information, please visit - www.studylink.govt.nz; or parents and whanau: parents.education.govt.nz/further-education/student-loans-and-allowances/

Our team is happy to help you with understanding your entitlements, just send us an email on info@aka.ac.nz and we can go from there!



International students



A friendly welcome awaits...

Settling in a new country, so different from your own, can be quite a challenge and we understand that and try our best to get you comfortable and settled as soon as possible. Our dedicated student services team, friendly staff and engaging faculty will have you feeling at home in no time at all!

A fun event is always around the corner at all the AKA providers with cultural days, campus activities, student events, and much, much more. Our aim is to provide high quality education and a fun-filled social life so students have a rewarding and exciting time.



Code of Pastoral Care

AKA's International Education providers have all agreed to observe and be bound by the Code of Pastoral Care of Tertiary and International Students 2021 published by the New Zealand Qualifications Authority. Copies of the code are available on request from us or from the New Zealand Qualifications Authority website - www.nzqa.govt.nz.

Student Fee Protection

In accordance with NZ Government regulations, your course fees are protected by Public Trust in a New Zealand Government guaranteed Student Fee Trust Account. The Public Trust Fee Protect system ensures that your fees are secure for the full term of your studies. Students pay their tuition fees straight to the Public Trust account and the Public Trust pays the provider they choose to study with, monthly in arrears in accordance with an agreed payment schedule. Each student's fees are held separately and a print out of the account balance can be reviewed online or you may ask student services for a copy of the account.

For further information about living and studying in New Zealand, refer to these websites:

Study in New Zealand - www.studyinnewzealand.govt.nz

NZQA Studying in NZ - www.nzqa.govt.nz/studying-in-new-zealand

New Zealand Now - www.newzealandnow.govt.nz

Tourism New Zealand - www.tourismnewzealand.com

Get ready for New Zealand - <https://nzready.immigration.govt.nz/>

Immigration New Zealand -

www.immigration.govt.nz/assist-migrants-and-students/assist-students



Your journey starts here

Admissions

We welcome applications from all students with the potential to succeed at AKA. You will need to satisfy the relevant admissions criteria for the programme. We may also consider applications from those with combinations of qualifications and those with other relevant work experience.

Equality and Diversity

The institute is committed to promoting diversity in all of its practices and activities. This is reflected in our multi-cultural student body and staff. The institute aims to establish an inclusive culture which welcomes applicants from all walks of life.

Enrolment, Fees and Semester Dates

More information about enrolment and semester dates is available online on our website - www.aka.ac.nz



Send an inquiry
info@aka.ac.nz
www.aka.ac.nz

Marketing team gets in touch with you

Fill the application form
and get all the information you need as a domestic or international applicant

Send us your documents
Filled in application form, certified copies of academic transcripts, Passport

Assessment of documents
Confirmation of meeting entry requirements

Offer of place
You're in!

Your growth
Start or upskill in your career!



Healthcare

Certificate in Disability Support (Level 3)

Certificate in Diversional Therapy and Community Health (Level 4)

New Zealand Diploma in Healthcare, Aging and Disability Services
(Applied Practice) (Level 5)



Certificate in Disability Support

(Level 3)

Delivered by:  Location: Auckland City

This programme prepares students who are wanting to gain knowledge and skills in the health & disability sector at an entry level either to work in the disability sector or pathway into higher level health and disability programmes.

Credits: 70 | Duration: 22 teaching weeks + 2 study break weeks | Clinical Placement: 120 hours

Qualification Gained

This programme leads to the **New Zealand Certificate in Health & Wellbeing (Level 3)**



Career Opportunities

This programme aims to provide students with the skills and knowledge to work in the disability sector or further study in health and disability.

Entry Requirements:

Domestic Applicants

- Ages 18 to 19
- ✿ At least 18 years of age at programme start date.
 - ✿ 8 credits at NCEA Level 1 in English (4 in reading, 4 in writing) or equivalent.
 - ✿ Minimum of 3 years secondary education.
 - ✿ There are no minimum academic requirements for applicants 20 years of age and over.

International Applicants

- ✿ At least 18 years of age at programme start date.
- ✿ Year 12 or 13 qualification or equivalent (high school) including at least one science subject.
- ✿ IELTS 5.5 with no band less than 5.0 (or equivalent as per the English Language Proficiency Requirements for International students determined by NZQA.)

What will I learn?

We value holistic education and guidance. This programme includes classroom-based learning, self-directed learning, and clinical placement. At the end of this programme, you will be able to:

- ✿ Show professionalism and ethical behaviour in a disability setting.
- ✿ Employ effective communication and behavioural management strategies.
- ✿ Apply knowledge of safe practice for medication assistance, safe handling, and infection control.
- ✿ Use natural supports and community participation to support the independence of persons living with a disability.
- ✿ Apply safe cultural practices and awareness of cultural differences in a person-centred care model.

Certificate in Diversional Therapy and Community Health

(Level 4)

Delivered by:  Location: Auckland City

This programme aims to provide skills and knowledge that facilitate professional knowledge and practice in communication with clients, knowledge of person-whanau interconnectedness, self-awareness of own role and purpose, and active contribution to professionalism. Diversional Therapy and Community Health Work specialisations provide contexts for the programme.

Credits: 180 | Duration: 60 teaching weeks + 12 study break weeks | Clinical Placement: 300 hours

Qualification Gained

This programme leads to the **NZ Certificate in Health & Wellbeing (Social & Community Services) with strands in Community Facilitation and Community Health Work (Level 4)**



Career Opportunities

Graduates will be able to work in the following areas: Diversional Therapist, Recreational Therapist, Activities Officer, Aged or Disabled Care Worker, Special Care Worker.

Entry Requirements:

Domestic Applicants

- Ages 18 to 19
- 18 years of age at programme start date.
 - 48 NCEA credits at Level 2 (including a minimum of 12 credits in each of the three subjects and 4 credits in English and 4 credits in writing).
 - There are no minimum academic requirements for applicants 20 years of age and over.

International Applicants

- 18 years of age at programme start date.
- Year 12/13 High School qualification equivalent or higher.
- IELTS 5.5 with no band less than 5.0 (or equivalent as per the English Language Proficiency Requirements for International students determined by NZQA.)
- Tertiary graduates and health care professionals who have experience in interacting with patients are preferred.

Highlights

On 18 April 2017, the NZ Government announced the Care and Support Workers (Pay Equity) Settlement Agreement. This set the standard for pay rates. The minimum rate for care and support workers employed after 1 July 2022 who hold an NZQA Health and Wellbeing Certificate at Level 4 is \$28.25 per hour.

What will I learn?

We value holistic education and guidance. This programme includes classroom-based learning, self-directed learning, and clinical placement. At the end of this programme, you will be able to:

- Engage and communicate with people, family and/or whanau accessing social and community services in a manner which respects their socio-cultural identity, experiences, and self-knowledge.
- Relate the history of Maori as tangata whenua and knowledge of person-whanau interconnectedness to own role in a health and well-being setting.
- Display self-awareness reflective practice and personal leadership in a health and wellbeing setting.
- Actively contribute to a culture of professionalism, safety, and quality in a health and wellbeing setting.
- Relate the purpose and impact of own role to the aims of the wider health and wellbeing sector.
- Work alongside people, family and/or whanau in a community facilitation setting to support autonomy by using tools and strategies to identify goals, address barriers and achieve aspirations.

NZ Diploma in Healthcare, Aging & Disability Services

(Applied Practice) (Level 5)

Delivered by:  **AGI** Education That Builds Careers Location: Auckland City; Manukau, Christchurch

Support the community and whānau by becoming a part of New Zealand's Healthcare Industry. The aim of this programme is to equip learners with the knowledge and skills to enter the health and wellbeing sector across a range of disciplines to support people from diverse contexts and achieve their health and wellbeing aspirations

Credits: 120 | Duration: 44-48 teaching weeks + 2 study break weeks | Clinical Placement: 300 hours



Career Opportunities

Graduates of this qualification will have the skills and knowledge required to work in vocational roles, disciplines or contexts such as: Consumer Advocacy, Disability Practice, Navigation/Navigator, Social Services, Counselling, Iwi Services, Mental Health Support, Youth Work in a range of settings such as non-governmental organisations, justice/corrections, social services, residential and community care and support services. Example of Job titles include Residentialcare Worker, Family Support Worker, Disability Services Worker, Community Health Assistant, Healthcare Assistant, Kaiawhina Hauora, Mental Health Support Worker, etc.

Qualification Gained

This programme leads to the **New Zealand Diploma in Health and Wellbeing** (Practice/Applied Practice) (Level 5)

Entry Requirements:

Recommended to hold one of the following qualifications, or equivalent knowledge, skills and experience. *

- ✿ Have completed Certificate in Healthcare Level 3; OR
- ✿ Successful completion of NCEA Level 2 or 3; OR
- ✿ Other equivalent education; OR
- ✿ Appropriate work experience in the healthcare sector

International Applicants

- ✿ IELTS 5.5 with no band less than 5.0 (or equivalent as per the English Language Proficiency Requirements for International students determined by NZQA).

Highlights

After successful programme completion, you may be eligible to earn up to \$27 per hour. This is under the Care and Support Workers (Pay Equity) Settlement Agreement.

What will I learn?

Graduates will demonstrate knowledge, skills and understanding of the practices, theories and principles required to be effective healthcare and wellbeing professionals. They will also be equipped to:

- ✿ Respond to the health and wellbeing aspirations of people from diverse contexts.
- ✿ Critically evaluate and apply evidence-based practices to support people to meet their health and wellbeing aspirations.
- ✿ Demonstrate high awareness of the socio-cultural, economic and political factors impacting the wider health and wellbeing environment to provide responsive support practices.
- ✿ Critically analyse and apply a range of evidence-based practices informed by knowledge of te ao Māori to respond to the health and wellbeing aspirations of tangata whenua.
- ✿ Critically reflect on and evaluate own support practice to achieve continuous improvement.
- ✿ Apply advanced strategies to respond to peoples' personal needs, personal goals, desired outcomes, potential resources in health or wellbeing setting.
- ✿ Critically analyse and respond to workplace responsibility, health and safety strategies and regulations in health or wellbeing setting.
- ✿ Analyse determinants of health that contribute to health status of population groups in New Zealand

Student Testimonials

Hear from our Healthcare Heroes



Teresa S.

"I'm studying the Diploma in Healthcare Level 5 at AGI - City Campus. I started studying here at AGI in May, and from the very beginning in until now, I've absolutely loved my experience here so far. I hold high regard for the Tutors, Administration Staff and Management here at AGI simply because of the support I've received due to a personal dilemma of mine. I won't go into detail of my personal circumstances but so that everyone knows. I appreciate everything, the support, the knowledge, the respect - every single person that's a part of AGI holds so much empathy, they thrive on loyalty, they show so much love and respect to all their students near and far. I'm so glad I made the decision to study at AGI. From the bottom of my heart, Thank You"

"AGI happens to be the best study institute I've been a part of. The tutors are amazing and very friendly. I found her classes to be very interesting and is very educational in all aspects of health. The curriculum is above standard. I've learnt so much in the 7 months I've been a part of AGI. I'm glad I made the choice to study at AGI."



Rusiate V.



Nazma Ali

"I could see so much pride in my daughters eyes when she saw me graduate. I'm proud of myself too. Thank you AGI. Thank you for helping me learn the skills to enter the Healthcare Industry."

"Moving to a new country is a big decision and i'm so glad I decided to come to AGI. Today i'm a valuable part of NZ healthcare system because of AGI!"

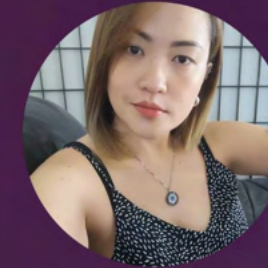


Swastika

"I took the leap of faith way back 2018, and with the help of my brother, I was able to come here and be an International student. Yes it is true that this is the easiest pathway to come here but the most expensive as well but looking back it is all WORTH IT. I studied Certificate in Diversional Therapy and Community Health Level 4 at Kauri Academy and landed a job related to the study while I was doing my clinical placement in a facility. I am forever grateful to Kauri Academy for being a part of what I have now. Ms. Emmie, Sir AJ, and Ms. Lizzie were the ones who have been there from day 1. And they really took care of us during the course. Thank you very much Kauri Academy and to the whole teaching staff and management. May God bless you more!"



Sol Llanes



Joyann Yngson

"Happy and Proud Product of Kauri Academy Here! I finished Diversional Therapy & Community Health. It equipped me with enough knowledge, skills and experience in various aspects in health care and served as an effective bridge towards pursuing my nursing career here in NZ! A very practical and yet very beneficial programme, I would highly recommend."

"The Mental Health and Addiction course at AGI trains us for what we can expect when we step into the Mental Health field."



Navjot



May Ann Magsino

I was bound to go home to Philippines, with a visa nearly to expire. I searched for schools and found Kauri Academy. They helped me with the requirements and assisted me lodging my student visa. I am very grateful for Kauri Academy, thank you Ms Ems and the management. The Diversional therapy and community health course is very flexible we had classmates with no health education background, they made it and they did it. Of course with the proper guidance of our teachers and management. They are our parents here in NZ, and like any other parent they want and will help us succeed here in NZ.



Pharmacy

Certificate in Pharmacy (introduction) (Level 3)

Certificate in Pharmacy Technician (Level 5)



Certificate in Pharmacy (Introduction to Pharmacy Practice) (Level 3)

Delivered by:  **KAURI** Location: Auckland City

This programme aims to provide the pharmacy sector with graduates with underpinning knowledge and skills in pharmacy retail.

Credits: 40 | Duration: 15 teaching weeks + 3 study break weeks | Clinical Placement: 120 hours

Qualification Gained

This programme leads to the **NZ Certificate in Pharmacy (Introduction to Pharmacy Practice) Level 3**



Career Opportunities

Graduates will be able to work within a pharmacy in a non-dispensing role with the supervision of a pharmacist or pathway into further study at level 4 or 5 in a pharmacy programme.

Entry Requirements:

Domestic Applicants

Ages 18 to 19

- ✿ At least 18 years of age at programme start date.
- ✿ 8 credits at NCEA Level 1 in English (4 in reading, 4 in writing) or equivalent.
- ✿ Minimum of 3 years secondary education.

- ✿ There are no minimum academic requirements for applicants 20 years of age and over.

International Applicants

- ✿ At least 18 years of age at programme start date.
- ✿ Year 12 or 13 qualification or equivalent (high school) including at least one science subject.
- ✿ IELTS 5.0 with no band less than 5.0 (or equivalent as per the English Language Proficiency Requirements for International students determined by NZQA).

What will I learn?

We value holistic education and guidance. This programme includes classroom-based learning, self-directed learning, and clinical placement.

- ✿ Safe practice and Communication / Professional and ethical basic practices for a Pharmacy Assistant
- ✿ Pharmacy-related products and services · Pharmacy Assistant (Clinical)

Certificate in Pharmacy Technician

(Level 5)

Delivered by:  Location: Auckland City

The programme aims to provide mature domestic and international learners with skills and qualifications which will enable them to work in New Zealand as a pharmacy technician.

Credits: 149 | Duration: 62 teaching weeks + 8 study break weeks | Clinical Placement: 440 hours

Qualification Gained

This programme leads to the **NZ Certificate in Pharmacy (Pharmacy Technician - Core) (Level 4) and the NZ Certificate in Pharmacy (Pharmacy Technician - Advanced) (Level 5)**



Career Opportunities

Graduates will be able to work in a dispensing pharmacy under the direct supervision of a pharmacist. You will be able to work in a range of dispensary related roles including those in community, hospital, industrial and educational settings in pharmacy.

Entry Requirements:

Domestic Applicants

- ✿ 18 years of age at programme start date.
- ✿ Level 3 New Zealand Certificate in Pharmacy (Introduction to Pharmacy Practice) (Level 3) qualification, OR
- ✿ A domestic or international bachelor's degree qualification in a health related field, Or
- ✿ Comparable pharmacy qualification which will be determined through a review of the transcript of learning.

International Applicants

- ✿ 18 years of age at programme start date.
- ✿ Level 3 New Zealand Certificate in Pharmacy (Introduction to Pharmacy Practice) (Level 3) qualification, OR a domestic or international bachelor degree qualification in a health related field, OR comparable pharmacy qualification which will be determined through a review of the transcript of learning.
- ✿ IELTS 5.5 with no band less than 5.0 (or equivalent as per the English Language Proficiency Requirements for International students determined by NZQA).

Tertiary graduates and health care professionals who have experience in interacting with patients are preferred.

What will I learn?

We value holistic education and guidance. This programme includes classroom-based learning, self-directed learning, and clinical placement. At the end of this programme, you will be able to:

- ✿ Understand the Pharmacy Council Code of Ethics
- ✿ Communicate with customers
- ✿ Apply the relevant pharmacy legislation and regulations.
- ✿ Apply an advanced level of knowledge of human anatomy, physiology and medicine used in the treatment of health disorders.
- ✿ Understand the use of dispensing medicine services.

Student Testimonials

Hear from our pharmacy graduates



**Kearny Jane Malayo
Tanguan-Royo**

“I studied Pharmacy Technician Level 5 at Kauri Academy. And it was so WORTH IT! I am now working in one of the DHB’s here and eligible for the 2021 one-off residency (family of four).”

Kauri Academy gave me a lot of opportunities to have thorough technical skills in different pharmacy settings. I have developed effective patient counselling, technical pharmaceutical knowledge and fundamental dispensary software which are beneficial in a community pharmacy environment. I also developed skills in extemporaneous compounding, dispensing prescription medications and undertaking dosage calculation which are ideal in a hospital pharmacy setting.

Having an experience in a hospital pharmacy, I was privileged to have my internship in one of the biggest hospitals in Auckland, Counties Manukau District Health Board, also known as Middlemore Hospital. After graduating, I was hired by Auckland District Health Board as a compounding Pharmacy Technician in PAPU (Pharmacy Aseptic Production Unit) where I compounded cytotoxic and immunosuppressant medication for patients undergoing chemotherapy procedures all over the Auckland area. After which, I was recruited by Southern District Health Board (Otago, Dunedin) as a Rotational Pharmacy Technician; compounding technician in APU (Aseptic Compounding Unit) and Dispensary Technician in the main hospital pharmacy in Dunedin Hospital.

At present, I’ve gained a total of 4 years experience as a Pharmacy Technician here in New Zealand and would say that it brings me satisfaction and fulfilment to my career. I thank Kauri Academy for helping me achieve my goals and letting me experience the wonderful pharmacy world in Aotearoa.



**Welshey Shem
Lacsamana**





Healthcare & Pharmacy
ONLINE



Certificate in Pharmacy (Introduction)

(Level 3)

Delivered by:  **AGI** Education That Builds Careers Programme owned by  **KAURI** Location: Online



This programme aims to provide the pharmacy sector with graduates with underpinning knowledge and skills in pharmacy retail. Graduates will be able to work within a pharmacy in a non-dispensing role with the supervision of a pharmacist.

Credits: 40 | Duration: 15 teaching weeks + 3 study break weeks (plus 4 weeks summer break depending on intake start date)

Qualification Gained

This programme leads to the **New Zealand Certificate in Health and Wellbeing (Level 3) Support Work Strand**

Core Papers Included:

CPI 1.1 Safe Practice
CPI 1.2 Pharmacy related products and services
CPI 1.3 Pharmacy Assistant (Clinical)

Programme Outcomes:

Graduates will be able to:

- ✿ Work ethically and professionally as required by the pharmacy codes and standards. Recognise and respond to signs of vulnerability and abuse in a health or wellbeing setting.
- ✿ Interact with pharmacy team members and customers/patients to ensure the provision of culturally appropriate customer service.
- ✿ Apply legislation relevant to their workplace.
- ✿ Determine if it is safe and appropriate to provide pharmacy-related products and services or advice to customers/patients and know when to refer to a pharmacist.
- ✿ Carry out a range of support activities within the pharmacy.
- ✿ Provide first aid.
- ✿ Perform calculations using appropriate information technology tools for point of sale transactions and retail operations.

Study Requirements:

Online learning requires completion of 8 hours per week of online engagement activities that are facilitator-led, and at least 12 hours per week of online reading, engaging with videos, learning activities, and formative assessment activities as scheduled.

This programme includes a 5 week Clinical Placement that is normally scheduled over 3 days per week.

Entry Requirements:

Available only to NZ Domestic Applicants

Learners enrolling must hold one of the following qualifications, or equivalent knowledge, skills and experience:

- ✿ At least 18 years of age at programme start date
- ✿ 8 credits at NCEA Level 1 in English (4 in reading, 4 in writing) or equivalent.
- ✿ Minimum of 3 years secondary education.



✿ There are no minimum academic requirements for applicants 20 years of age and over

Zero Fees Apply, Student loans and allowances available for eligible students

Zero Fees
APPLY*

Ages
18 to 19

Certificate in Disability Support (Level 3)

Delivered by:  **AGI** Education That Builds Careers Programme owned by  **KAURI** TE KURA KAURI O AOTEAROA Location: Online



The aim of this programme is provide international and domestic students with the skills and knowledge to pathway either into an entry level position in the health and disability sector or to further study at a higher level in the areas of health and disability.

Credits: 70 | Duration: 22 teaching weeks + 2-6 study break weeks (plus 4 weeks summer break depending on intake start date)

Qualification Gained

This programme leads to the **New Zealand Certificate in Health and Wellbeing (Level 3) Support Work Strand**

Core Papers Included:

CDS 1.1 Key Accountabilities of a Support Worker
CDS 1.2 Disability Communication and Support
CDS 1.3 Personal Disability Support
CDS 1.4 Support of Aspirations

Programme Outcomes:

Graduates will be able to:

- ✿ Apply knowledge of relevant legislation, regulations and codes in a health and wellbeing setting to provide health and wellbeing services in an ethical and professional manner.
- ✿ Recognise and respond to signs of vulnerability and abuse in a health or wellbeing setting.
- ✿ Communicate effectively in a culturally appropriate manner to support a person's health or wellbeing.
- ✿ Provide culturally appropriate person-centred health and wellbeing support to maximise a person's independence.
- ✿ Recognise and respond to signs of functional, behavioural, environmental or other health or wellbeing change in a person, in a home or community setting.

Study Requirements:

Online learning requires completion of 8 hours per week of online engagement activities that are facilitator-led, and at least 12 hours per week of online reading, engaging with videos, learning activities, and formative assessment activities as scheduled.

This programme includes a 5 week Clinical Placement that is normally scheduled over 3 days per week.

Entry Requirements:

Available only to NZ Domestic Applicants

Learners enrolling must hold one of the following qualifications, or equivalent knowledge, skills and experience:

Ages
18 to 19

- ✿ At least 18 years of age at programme start date
8 credits at NCEA Level 1 in English (4 in reading, 4 in writing) or equivalent.
- ✿ Minimum of 3 years secondary education.

- ✿ There are no minimum academic requirements for applicants 20 years of age and over



Business

NZ Diploma in Business (Leadership and Management) (Level 6)

Diploma in Business Management (Brand Management) (Level 7)

Diploma in Business Management (Business Information Technology) (Level 7)

Diploma in Business Management (Digital Marketing) (Level 7)



NZ Diploma in Business (Leadership and Management) (Level 6)

Delivered by:  ALPHA EDUCATIONAL INSTITUTE

Location: Auckland City

This qualification will provide New Zealand business entities with people who have the skills and knowledge to manage and lead, and to achieve entity objectives, at a strategic level in a bi- and multi cultural environment.

Credits: 120 | Duration: 40 teaching weeks

Qualification Gained

This programme leads to the **NZ Diploma in Business (Leadership and Management)** (Level 6)



Career Opportunities

Graduates with the NZ Diploma in Business (Leadership and Management) (Level 6) will have the skills and knowledge to work as a manager/leader in a range of strategic roles within New Zealand business entities.

Entry Requirements:

Domestic Applicants

- ✿ At least 20 years of age at programme start date.
- ✿ A minimum of 14 numeracy credits at Level 1 or higher in Mathematics or Pangarau on the National Qualifications Framework
- ✿ 50 credits at Level 1 or above with at least 12 credits each of three subjects plus a minimum of eight literacy credits at Level 2 or higher in English or Te Reo Māori; four credits must be in Reading and four credits must be in writing.
- ✿ Provisional entry can be granted to applicants with sufficient work experience.

International Applicants


- ✿ IELTS 6.0 with individual no band less than 5.5 or equivalent as per the English Language Proficiency Requirements for International students determined by NZQA.

What will I learn?

Graduates will have the skills and knowledge needed for effective management and leadership, leading to increases in productivity.

NZ Diploma in Business Management (Brand Management)

(Level 7)

Delivered by:  ALPHA EDUCATIONAL INSTITUTE

Location: Auckland City

This qualification will provide both New Zealand and global businesses and organisations with graduates who can apply advanced business management knowledge and skills to be able to manage within a business management environment.

In addition to advanced business management knowledge and skills, graduates with a specialisation in Brand Management will be able to design effective marketing programmes to build, measure and manage brand equity.

Credits: 120 | Duration: 40 teaching weeks

Qualification Gained

This programme leads to the **NZ Diploma in Business (Leadership and Management) Level 5**

Career Opportunities

Graduates may work as: Brand Manager, Associate Brand Manager, Marketing Manager, Assistant Brand Manager, Marketing Specialist, Social Media Marketing Manager, Event Co-Ordinator, Product Development Officer.

Suitable Industries

Graduates may be eligible to work in Retail and Manufacturing, Digital and Media, Hospitality and Service Industry, and Education.

Entry Requirements:


Applicants must provide evidence of:

- ✿ A level 6 or higher qualification in Business (or equivalent) or
- ✿ A degree in other disciplines related to selected specialisation
- ✿ International students for whom English is not their first language must also have an IELTS score of 6.0 (Academic) with no individual band lower than 5.5, or equivalent evidence of English language proficiency in accordance with NZQA regulations.



NZ Diploma in Business Management (Digital Ubiquitous Marketing)

(Level 7)

Delivered by:  ALPHA EDUCATIONAL INSTITUTE

Location: Auckland City

This qualification will provide both New Zealand and global businesses and organisations with graduates who can apply advanced business management knowledge and skills to be able to manage within a business management environment.

In addition to advanced business management knowledge and skills, graduates with a specialisation in digital ubiquitous marketing practices are equipped to reach new customers, build customer loyalty, retain customers and improve overall profitability.

Credits: 120 | Duration: 40 teaching weeks

Qualification Gained

This programme leads to the **NZ Diploma in Business Management with strands in Digital Ubiquitous Marketing (Level 7)**

Career Opportunities

Graduates may work as: Digital Marketer, Digital Campaign Manager, Social Media Marketing Strategist, Digital Marketing Co-ordinator, Mobile Marketing Planner, Online Media Marketing Manager, Web Marketing Specialist, Data and Web Traffic Analyst, Product Development Officer.

Suitable Industries

Graduates may be eligible to work in: Digital and Media, Retail, Manufacturing Industry, Education Industry, Communication & Technology Industry, Hospitality.

Entry Requirements:

Applicants must provide evidence of:

- ✿ A level 6 or higher qualification in Business (or equivalent) or
- ✿ A degree in other disciplines related to selected specialisation
- ✿ International students for whom English is not their first language must also have an IELTS score of 6.0 (Academic) with no individual band lower than 5.5, or equivalent evidence of English language proficiency in accordance with NZQA regulations.



NZ Diploma in Business Management (Business Information Tech.)

(Level 7)

Delivered by:  ALPHA EDUCATIONAL INSTITUTE

Location: Auckland City

This qualification will provide both New Zealand and global businesses and organisations with graduates who can apply advanced business management knowledge and skills to be able to manage within a business management environment.

In addition to advanced business management knowledge and skills, graduates with a specialisation in Business Information Technology will be able to manage e-business platforms to support strategic technology infused business processes in the digital age.

Credits: 120 | Duration: 40 teaching weeks

Qualification Gained

This programme leads to the **NZ Diploma in Business Management with strands in Business Information Technology** (Level 7)

Career Opportunities

Graduates may work as: Data base and System Administrators, Network and Support Professionals, Business Operation Analyst, IT Strategy Consultant, IT Project Manager, Business Analyst, Technical Business Analyst.

Suitable Industries

Graduates may be eligible to work in: Information Technology, Retail and Manufacturing, Service Industry.

Entry Requirements:

Applicants must provide evidence of:

- ✿ A level 6 or higher qualification in Business (or equivalent) or
- ✿ A degree in other disciplines related to selected specialisation
- ✿ International students for whom English is not their first language must also have an IELTS score of 6.0 (Academic) with no individual band lower than 5.5, or equivalent evidence of English language proficiency in accordance with NZQA regulations.



Student Testimonials

Hear from our professionals in the industry



Rosalinda Bayno

"I have earned my certificate in Diploma in Business Management Level 7 with a specialisation in Brand Management. I've gained wisdom and enjoyed faculty support. I've gained confidence now and have become a better person, than I can be, because of my extraordinary experience at Alpha Educational Institute, Auckland and I am forever grateful."

"My Business Management journey at AEI was a special experience as it offered me the opportunity to gain business management skills, leadership skills and problem solving skills. AEI taught me the "can-do attitude" to have confidence and willing to deal with the problems or new tasks. Also, AEI enabled me to grow on my career path."



Bia Chaipipattanamongkhon



Diego Martin Fernandez

"Studying at AEI was an excellent experience because I met excellent people - my classmates and teachers were excellent with me. AEI helped me a lot to develop my language skills, especially since English is my second language. A highly recommended experience for students from anywhere in the world and of all ages!"

"My experience at AEI was full of learning. It gave me an opportunity to meet different kinds of people and their culture and learnt many things from them. I am really thankful to all the facilitators for providing us with quality education. All I can say is, It was a great experience studying at AEI, a memory to cherish for a lifetime and I would highly recommend you to study and be part of AEI family."



Mae Anne Buaya Alipio

"I want to say a big Thank You to all AEI staff! For students who will come to AEI in the year 2022 or so, it will be so natural to have hybrid or online deliveries. Our group was the first one to go through all that transformation due to the first lockdowns and unexpected changes, and we saw how agile AEI was. How much effort they put into changing educational process on the go, buying and learning new software, and organising online infrastructure so that everyone could continue studying and could finish their program on time.."



Nadiya Kovalova



Shivam Sharma

"My experience was so great and awesome and I really miss my school days. I learned so many things from AEI and I also made good friends. We have lovely teachers who are always ready to help and support in every situation. I am very thankful for this school who accepted me and made me be a part of the AEI family."

"I have just graduated my Diploma in Business Management Level 7 with specialisation in Brand Management at AEI. The scheme of studying from home and in class is an ideal combination for me and it works perfectly! I found friends in school and received a great support from management and teachers. I really appreciate this."



Daria Varennikova



Patricia Furlan

"AEI encourages students to learn through case studies from New Zealand which is really valuable for international students. After studying Diploma in Business Management Level 7 at AEI, I have improved my skills in a lot of areas like Strategic Management, Marketing, Human Resource and especially in Finance and developed a better understanding of the New Zealand market."



Makeup Artistry

- Certificate in Fashion Makeup (Level 3)
- Certificate in Advanced Fashion & Creative Media Makeup (Level 4)
- School Holiday Programme
- Makeup Workshop



Certificate in Fashion Makeup

(Level 3)



Location: Auckland City; Manukau



This qualification will provide you with all the fundamental skills and techniques to start your journey into the exciting world of Fashion Makeup. Upon completion of the course, this qualification will allow you to work for various cosmetic brands and counters as well as confidentially freelance and work with private clients.

Credits: 60 | Duration: 17 week (Full Time) ; 36 weeks (Part Time)

This programme leads to the **New Zealand Certificate in Makeup and Skin Care** (Introduction) (Level 3)

Qualification Gained

Entry Requirements

- ✿ Must be 16 years or older
- ✿ Must be a New Zealand Citizen or Resident
- ✿ Demonstrate proficient use and understanding of spoken and written English

Highlights

PROFESSIONAL MAKEUP KIT

When you enrol in this course, you'll receive a starter makeup kit comprising of industry leading brands that you'll use throughout the course (course material fee applies).

CREATIVE PORTFOLIO

We provide intensive theoretical and practical training, including photoshoots, to assess your learning. During the course, you'll be able to start to build a portfolio that you can use to show clients your skills and techniques.

INDUSTRY-EXPERT TUTORS

We have expert tutors who are current practitioners and widely experienced in the industry. You are assured of getting the best teaching possible, grounded in real world experience.

WORK EXPERIENCE OPPORTUNITIES

Due to SRA's extensive network of industry contacts, during our certificate courses work experience opportunities frequently arise which enable students to work on prestigious pageants, shows, special events, photoshoots, and much more

FULL AND PART-TIME OPTIONS AVAILABLE

Study the way that best suits your lifestyle and commitments. We offer both a full-time 17-week course, or part-time 2 nights a week plus every third Saturday over a 36-week period.

What will I learn?

- ✿ Tools and Equipment and Hygiene
- ✿ Colour theory, face shapes, and corrective techniques
- ✿ Structure of face, skin types, skin conditions, and analysis
- ✿ Face charts
- ✿ Beauty makeup application: Client Natural, Client Elegant, Client Sultry, Ball Makeup, Bridal Makeup, Male Makeup, Mature Makeup
- ✿ Introduction to Fashion makeup: Soap Brows, High Gloss Makeup, Fashion Editorial, Bridal Editorial
- ✿ Sales techniques
- ✿ Personal development & getting established in the industry
- ✿ First Aid
- ✿ Course includes 4 full professional photoshoots of key looks.

Certificate in Advanced Fashion & Creative Media Makeup

(Level 4)

Delivered by:  Location: Auckland City



This qualification will provide you with advanced skills and techniques to excel your journey & career as a Makeup Artist. This also includes developing a professional portfolio and how to get established and promote yourself in the industry, and 4 full professional photoshoots of key looks.

Credits: 120 | Duration: 36 week (Full Time)

Qualification Gained

This programme leads to the **NZ Certificate in Makeup Artistry (Level 4)**

Entry Requirements

- ✿ Must be 16 years or older
- ✿ Must be a New Zealand Citizens or Resident
- ✿ Demonstrate proficient use and understanding of spoken and written English
- ✿ Undertake the Level 4 interview process

Highlights

PROFESSIONAL MAKEUP KIT

When you enrol in this course, you'll receive a starter makeup kit comprising of industry leading brands that you'll use throughout the course (course material fee applies).

CREATIVE PORTFOLIO

We provide intensive theoretical and practical training, including photoshoots, to assess your learning. During the course, you'll be able to start to build a portfolio that you can use to show clients your skills and techniques. We will also help you get started to publicise your skills and drive business online.

INDUSTRY-EXPERT TUTORS

We have expert tutors who are current practitioners and widely experienced in the industry. You are assured of getting the best teaching possible, grounded in real world experience.

WORK EXPERIENCE OPPORTUNITIES

Due to SRA's extensive network of industry contacts, during our certificate courses work experience opportunities frequently arise which enable students to work on prestigious pageants, shows, special events, photoshoots, and much more

What will I learn?

- ✿ Special Effects: *Bullet wounds, cuts, bruising, burns, scatches, latex character, aging & prosthetics application*
- ✿ Advanced Makeup Application: *Historical/Period (incl. hair & costume), Ethic, Catwalk & Advanced Fashion, Avant-Garde, Fantasy, Horror, Male, Bridal, Natural Sultry, Elegant, Mature*
- ✿ Colour Theory & face-chart design
- ✿ Complimentary Services: *Hairstyling, Lash & brow tinting, Manicure*
- ✿ Lighting: *Editorial / TV & Film / On-set protocol*
- ✿ Anatomy of the face
- ✿ Client consultation
- ✿ Professional conduct
- ✿ Business models & sales techniques
- ✿ First Aid

School Holiday Programme

(5 day programme)

Our unique School Holiday Programme offers a practical, hands on taster of the creative world of professional makeup artistry.

Students learn a range of techniques in an exciting and supportive learning environment and have the opportunity to practice what they love while exploring makeup as a career pathway. Each part of the programme can also be done separately depending on a student's area of interest.

Entry Requirements

- ✿ Must be Year 11 to Year 13 student
- ✿ Demonstrate proficient use and understanding of spoken and written English



Highlights

CLASSROOM RESOURCES

High-quality professional products, materials & tools provided.

DEDICATED TUTOR

Tuition, demonstration, feedback, and hands-on assistance from a trained professional makeup artist. Demonstration and practice time every lesson to maximise learning.

FUN, ENGAGING CONTENT

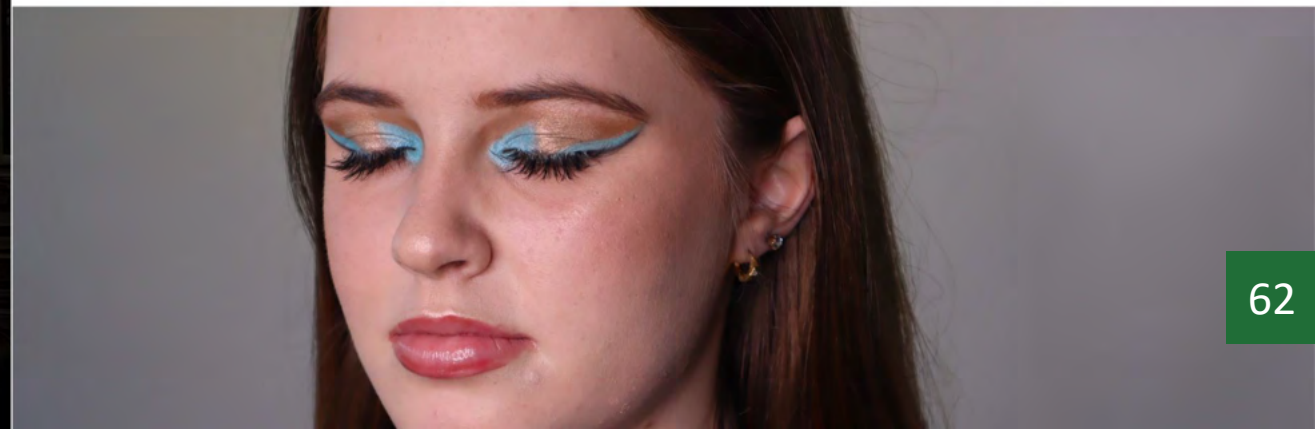
Our aim is to learn, while also having fun. As a result, these courses are very popular and heavily subscribed – book early to be sure of a place.

CERTIFICATE OF ACHIEVEMENT

On successful completion of each one of the three courses you will receive SRA's Certificate of Achievement plus up to 10 credits on the National Framework if you complete all 3 courses.

What will I learn?

- ✿ Module 1: SFX & Beauty (4 Credits at Level 3) US 28946
Subjects covered include: Tools and Equipment | Sterilization | Hygiene | Foundation matching | Natural makeup | Face charts | Soft smokey eye makeup | Latex finger
- ✿ Module 2: SFX & InstaGlam (4 credits at Level 3) US 27644
Subjects covered include: Face shapes – Contouring & highlighting | Cut creases | Bullet wounds/Scratches | Winged liner | Lash application | Flawless base application techniques.
- ✿ Module 3: SFX & Editorial Makeup (2 Credits at Level 3) US 27176
Subjects covered include: Microorganism | Soap brows | Burns | Graphic liner | High gloss look | Embellishments



Professional Makeup Workshop

(4 evening workshop)

SRA's newly designed 4-day workshop is intended for those who are wanting to learn a wide range of techniques to apply on themselves and achieve flawless staple beauty looks.

In this intensive foundation workshop, you will have the opportunity to be trained and guided by our industry expert tutors in an intimate teaching environment where feedback is tailored to your artistry needs.

Duration: 4 days; three-hour evening sessions, spread across two weeks

Entry Requirements

- ✿ Must be 16 years or older
- ✿ Demonstrate proficient use and understanding of spoken and written English

What will I learn?

- ✿ Hygiene
- ✿ Introduction to Tools and Makeup
- ✿ Evening Makeup/ Smoky and Smouldering Natural Makeup/ Naturally Beautiful Cut Crease

Highlights

LATEST MAKEUP TRENDS & TECHNIQUES

You will not only learn fundamental industry-relevant techniques but also the latest trends

DEDICATED TUTOR

This workshop will be taught by one of our industry-expert and recognized tutors.

MAXIMUM ONLINE ASSISTANCE

We keep the class capacity small, so you can get one-on-one attention and assistance.



Student Testimonials

Graduate Makeup Artists profile



Aaron Richards

To be able to makeup people feel and look beautiful both inside and out is the reason Aaron pursued makeup as a career. He wants to be able to pamper them and give them to experience the transformation.

He searched for quite a while to find somewhere that suited him and SRA offered everything that he was looking for to expand his knowledge and skills within the makeup industry.

Studying at SRA was a highlight of his career as it was his passion to finally do what he always wants to do and have the love and support to do it. "I honestly couldn't ask for anything more, the tutors had/have your back 100% and show their love and support throughout! The way they taught us, the environment you study in and the people around you are all there for the same reason to fulfil their dreams in doing makeup and helping others."

Having graduated with Excellence, Aaron became part of the SRA Creative Team, where he was given amazing opportunities within the industry such as being part of the backstage team doing makeup for Miss New Zealand 2016 and New Zealand Fashion Week 2016. Through these, his network started to grow and received several opportunities to do makeup for photoshoots as well as private functions. Not to forget, he has recently got offered a job at M.A.C Cosmetics which was one of his dreams that he can finally tick off his bucket list.



Elise Wilson

When Elise Wilson scored a job as an editorial assistant at a top women's magazine a seven years ago, she thought she had found her dream role. She loved the world of magazines and certainly wasn't afraid of a little hard work.

She soon proved herself more than capable and, while she found the admin side of the job fairly mundane, she quickly expanded her role into beauty writing and helping to collate the fashion and beauty pages for New Idea and Girlfriend magazines. But in doing all this she found a new ambition. She discovered a passion for cosmetics and beauty that went beyond just writing.

When a friend recommended SRA, Elise saw the chance to train as a fashion makeup artist and booked herself onto the next available 32 week part-time course. With a lot of determination and giving up many weekends to build her portfolio, Elise launched a new career. Thanks to the comprehensive training she received at SRA, she started out in the industry with good skills, knowledge and support.

Within three years she established herself as a freelance professional makeup artist, specialising in weddings, balls and magazine work, with some shoots appearing in the very magazines she started out with. She continues to work as a Beauty Editor and is now aligned with M2 Woman Magazine across their print and online forums.



Information

Quality Assurance Statement

NZQA assesses the standard of education for tertiary education organisations through a regular system of external evaluation and review (EER). Through periodic EER, tertiary education organisations are held accountable to their students, employers, funders, quality assurance bodies and other interested parties. Please go to <http://www.nzqa.govt.nz> and look for our schools. You can see our latest EER reports from NZQA. Please refer to our individual school websites to read about our support and guidance for international students.

Code of Practice for the Pastoral Care of Tertiary and International Learners 2021

Our schools have agreed to observe and be bound by the code of Practice for the Pastoral Care of Tertiary and International learners published by the Ministry of Education, and managed by the Code Administrator, New Zealand Qualification Authority. Copies of the Code are available on request from this institution or you can find it here: <https://www.education.govt.nz/further-education/information-for-tertiary-students/code-of-practice-pastoral-care-domestic-tertiary/>

Recruitment Agent Behaviour

Our Recruitment Agents have been carefully selected and screened to become trusted partners of AKA Education Group Schools. Our Recruitment Agents have also agreed to observe and be bound by the Code of Practice. This includes:

- providing international students with reliable information and advice about studying, working, and living in New Zealand; and
- acting in an ethical manner with integrity and professionalism towards prospective international students.

Any concerns regarding the behaviour of a Recruitment Agent, should be notified to AKA.

Health & Travel Insurance

International students (including group students) must have appropriate and current medical and travel insurance while studying in New Zealand.

Accident Insurance

The Accident Compensation Corporation provides accident insurance for all New Zealand citizens, residents and temporary visitors to New Zealand, but you may still be liable for all the other medical and related costs.

Check for more information at <http://www.acc.co.nz>

Eligibility for Health Service

Most international students are not entitled to publicly funded health services within New Zealand. If you receive medical treatment during your visit, you may be liable for the full costs of that treatment. Full details on entitlements to publicly-funded health, service are available through the Ministry of Health and can be viewed on their website at: <http://www.moh.govt.nz>





Auckland City



Christchurch



Manukau

